

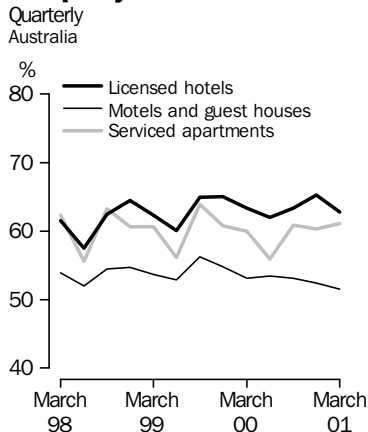


TOURIST ACCOMMODATION AUSTRALIA

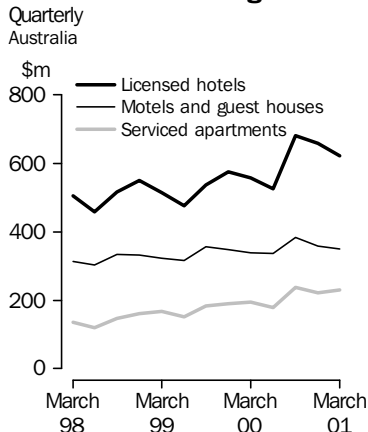
EMBARGO: 11:30AM (CANBERRA TIME) FRI 22 JUNE 2001

MARCH QTR KEY FIGURES

Occupancy rates



Accommodation takings



LICENSED HOTELS	Mar Qtr 2000	Mar Qtr 2001	change
Rooms available (no.)	73 760	77 626	5.2 %
Room occupancy rate (%)	63.3	62.8	-0.5 pts
Takings from accommodation (\$'000)	556 825	619 156	11.2 %
Average takings per room night occupied (\$)	131.4	141.1	9.7 \$

MOTELS AND GUEST HOUSES	Mar Qtr 2000	Mar Qtr 2001	change
Rooms available (no.)	85 821	84 432	-1.6 %
Room occupancy rate (%)	53.1	51.5	-1.6 pts
Takings from accommodation (\$'000)	337 890	342 730	1.4 %
Average takings per room night occupied (\$)	81.7	87.7	6.0 \$

SERVICED APARTMENTS	Mar Qtr 2000	Mar Qtr 2001	change
Rooms available (no.)	31 542	34 501	9.4 %
Room occupancy rate (%)	60.0	61.1	1.1 pts
Takings from accommodation (\$'000)	193 602	229 956	18.8 %
Average takings per room night occupied (\$)	113.1	121.4	8.3 \$

- For further information about these and related statistics contact Neil McKellar-Stewart on 07 3222 6364 or the National Information Service on 1300 135 070.

NOTES

FORTHCOMING ISSUES

<i>ISSUE</i>	<i>RELEASE DATE</i>
June Quarter 2001	21 September 2001

INTRODUCTION

This publication contains the results of the quarterly Survey of Tourist Accommodation (STA). The STA includes hotels, motels, guest houses and serviced apartments with 15 or more rooms.

DATA NOTES

The 'takings from accommodation' data collected from 1 July 2000 is on a GST inclusive basis. Care should be taken when comparing takings data from September quarter 2000 onwards with takings from previous quarters.

Some under-reporting of GST has been identified. Adjustments will be made in the next issue of this publication once further information collected from the June quarter 2001 survey has been evaluated. These adjustments are expected to increase takings data for the September quarter 2000 to March quarter 2001 by between 4% and 6%.

CHANGES IN THIS ISSUE

The scope of the STA was expanded for the four quarters of calendar year 2000 to include holiday flats and units, caravan parks and visitor hostels (see Explanatory Notes for details). From March quarter 2001 the scope only includes hotels, motels, guest houses and serviced apartments with 15 or more rooms or units.

From March quarter 2001 changes have been made to some Statistical Local Areas (SLA) and Tourism Regions (TR) in New South Wales and South Australia. These changes have been made in response to requests from State government tourism agencies. Details of these changes are included in the Explanatory Notes.

SYMBOLS AND OTHER USAGES

n.a.	not available
n.p.	not available for publication but included in totals where applicable
r	revised
..	not applicable
—	nil or rounded to zero

Dennis Trewin
Australian Statistician

ANALYSES AND COMMENTS

HOTELS, MOTELS AND SERVICED APARTMENTS

The number of in-scope establishments in the hotels, motels, guest houses and serviced apartments sectors of the tourist accommodation industry increased 1.1% in March quarter 2001 when compared with March quarter 2000. The number of serviced apartments increased 6.2% nationally, with New South Wales recording the largest percentage increase, up 10.5% over the period. Of the 649 serviced apartments in the scope of the Survey of Tourist Accommodation (STA) 272 (42%) are in Queensland. By contrast, New South Wales has the largest share of the 781 licensed hotels and 2400 motels in the scope of the STA.

The supply of guest rooms in Australian hotels and serviced apartments continued to increase, up 5.2% and 9.4% respectively, in March quarter 2001 compared to March quarter 2000. The increase was highest in New South Wales, up 13.6% and 23.0% respectively. Most of the increase in supply occurred in the Sydney Tourism Region during the Olympic Games in September 2000.

The number of guest rooms in motels and guest houses decreased for the fourth successive quarter. All States and Territories recorded decreases in March quarter 2001 compared with March quarter 2000 except South Australia, Western Australia and Northern Territory.

These supply trends are also reflected in the demand for tourist accommodation. Room nights occupied in hotels and serviced apartments increased 3.5% and 10.7% respectively, while motels and guest houses recorded a decrease of 5.6%. The largest percentage changes occurred in New South Wales.

In terms of room occupancy rates, the March quarter 2001 results compared with the March quarter 2000 show an overall decrease of 0.5 percentage points. Serviced apartments recorded a marginal increase of 1.1 percentage points, while occupancy rates in hotels and motels fell 0.5 percentage points and 1.6 percentage points respectively. Tasmania was the only State or Territory to record increases across all accommodation types, up 2 percentage points to 68.2%.

Guest arrivals increased a modest 1.3% across Australia in the March quarter 2001, when compared to the corresponding quarter in 2000. While guest arrivals in serviced apartments and hotels increased 14.7% and 1.5% respectively, these were largely offset by a 2.3% decline in motel guest arrivals. These patterns were reflected in most States and Territories except Queensland, Western Australia and the Northern Territory which recorded positive growth in motel guest arrivals over the period.

Accommodation takings in hotels, motels, guest houses and serviced apartments for the year ended 31 March 2001 totalled \$4.77 billion of which just over half was taken by licensed hotels. This represented a 13.0% increase on the previous year. Takings increased between the two years by 20.3% for serviced apartments, 15.8% for licensed hotels and 4.6% for motels.

ANALYSES AND COMMENTS

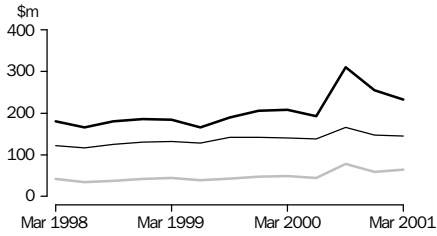
HOTELS, MOTELS AND SERVICED APARTMENTS

March quarter 2001 takings from hotels, motels and guest houses, and serviced apartments increased 9.5% compared with March quarter 2000. Takings from serviced apartments increased 18.8% across Australia with New South Wales up 29.9% to \$63.7 million. Takings from hotels increased 11.2% to \$619 million while takings from motels recorded an increase of 1.4% to \$343 million.

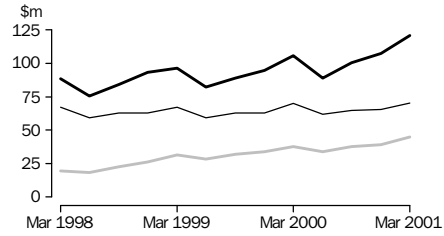
ACCOMMODATION TAKINGS

Licensed hotels
 Motels and guest houses
 Serviced apartments

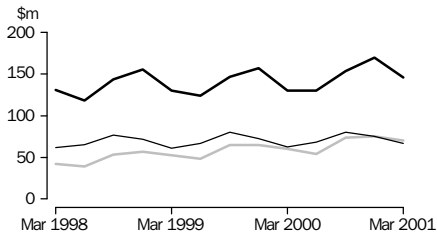
NEW SOUTH WALES



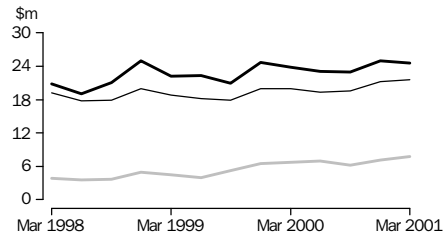
VICTORIA



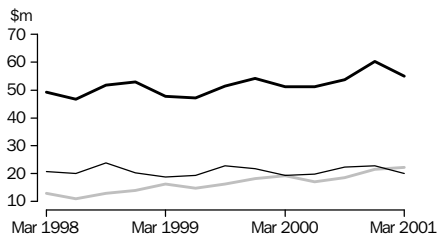
QUEENSLAND



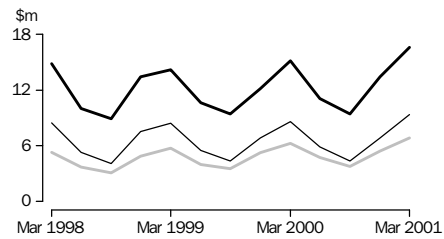
SOUTH AUSTRALIA



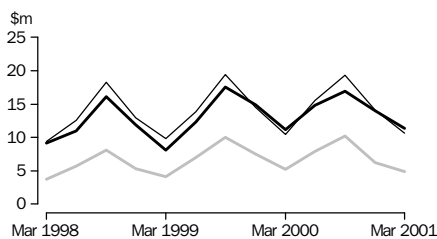
WESTERN AUSTRALIA



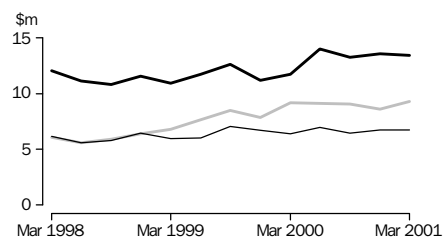
TASMANIA



NORTHERN TERRITORY



AUSTRALIAN CAPITAL TERRITORY



LIST OF TABLES

Page

	Summary of accommodation establishments	
1	Hotels, motels, guest houses and serviced apartments, Australia	7
	Hotels, motels, guest houses and serviced apartments, by star grading	
2	Australia	8
3	New South Wales	10
4	Victoria	12
5	Queensland	14
6	South Australia	16
7	Western Australia	18
8	Tasmania	20
9	Northern Territory	22
10	Australian Capital Territory	24
	Hotels, motels, guest houses and serviced apartments, by Tourism Region	
11	New South Wales	26
12	Victoria	28
13	Queensland	30
14	South Australia	32
15	Western Australia	33
16	Tasmania	34
17	Northern Territory and Australian Capital Territory	35

1

SUMMARY OF ACCOMMODATION ESTABLISHMENTS (a)—Australia

<i>Period</i>	<i>Establish-ments</i> no.	<i>Guest</i> <i>rooms</i> no.	<i>Bed</i> <i>spaces</i> no.	<i>Persons</i> <i>employed</i> no.	<i>Room</i> <i>nights</i> <i>occupied</i> '000	<i>Room</i> <i>occupancy</i> <i>rate</i> %	<i>Guest</i> <i>nights</i> '000	<i>Bed</i> <i>occupancy</i> <i>rate</i> %	<i>Guest</i> <i>arrivals</i> '000	<i>Average</i> <i>length of</i> <i>stay</i> days	<i>Takings</i> <i>from accom-</i> <i>modation</i> \$'000
LICENSED HOTELS WITH FACILITIES											
1999											
December quarter	766	73 416	196 329	72 872	4 389	65.1	7 239	40.1	3 148	2.3	574 687
2000											
March quarter	767	73 760	197 179	72 728	4 239	63.3	6 950	38.9	2 989	2.3	556 825
June quarter	767	74 302	197 513	72 517	4 177	62.0	6 668	37.2	2 946	2.3	525 795
September quarter	774	76 607	203 977	73 695	4 447	63.3	7 261	38.8	2 955	2.5	681 214
December quarter	780	76 783	204 109	73 457	4 607	65.3	7 569	40.3	3 109	2.4	659 337
2001											
March quarter	781	77 626	205 020	72 670	4 387	62.9	7 294	39.6	3 034	2.4	619 156
Year ended March 2000	16 811	63.4	27 612	38.7	11 970	2.3	2 146 275
Year ended March 2001	17 617	63.4	28 793	39.0	12 044	2.4	2 485 501
MOTELS AND GUEST HOUSES WITH FACILITIES											
1999											
December quarter	2 413	86 019	255 588	31 429	4 328	54.8	7 578	32.3	4 163	1.8	347 480
2000											
March quarter	2 411	85 821	254 335	31 464	4 138	53.1	7 295	31.6	3 947	1.8	337 890
June quarter	2 412	86 091	254 578	31 341	4 176	53.4	7 214	31.2	3 977	1.8	335 620
September quarter	2 412	85 078	251 929	31 342	4 142	53.1	7 286	31.5	3 980	1.8	383 303
December quarter	2 402	84 722	250 170	30 328	4 083	52.4	7 167	31.2	3 955	1.8	359 491
2001											
March quarter	2 400	84 432	248 795	29 917	3 907	51.5	6 982	31.2	3 856	1.8	342 730
Year ended March 2000	16 957	54.3	29 737	32.0	16 294	1.8	1 358 427
Year ended March 2001	16 309	52.6	28 649	31.3	15 768	1.8	1 421 145
SERVICED APARTMENTS											
1999											
December quarter	600	30 644	107 748	10 851	1 696	60.8	3 673	37.3	1 002	3.7	190 280
2000											
March quarter	611	31 542	107 951	10 807	1 712	60.0	3 792	38.8	995	3.8	193 602
June quarter	626	32 437	110 381	11 400	1 647	55.9	3 488	34.8	923	3.8	178 063
September quarter	641	33 394	113 130	11 466	1 860	60.9	4 041	39.0	1 044	3.9	237 641
December quarter	646	33 421	113 267	11 612	1 853	60.3	4 040	38.8	1 143	3.5	221 080
2001											
March quarter	649	34 501	115 146	11 872	1 894	61.1	4 183	40.4	1 142	3.7	229 956
Year ended March 2000	6 557	60.3	14 212	37.5	3 804	3.7	720 210
Year ended March 2001	7 254	59.6	15 751	38.3	4 252	3.7	866 740
TOTAL ESTABLISHMENTS											
1999											
December quarter	3 779	190 079	559 665	115 152	10 414	59.7	18 490	36.0	8 313	2.2	1 112 447
2000											
March quarter	3 789	191 123	559 465	114 999	10 088	58.2	18 037	35.5	7 931	2.3	1 088 317
June quarter	3 805	192 830	562 472	115 258	10 000	57.1	17 370	34.0	7 847	2.2	1 039 478
September quarter	3 827	195 079	569 036	116 503	10 449	58.4	18 589	35.6	7 979	2.3	1 302 158
December quarter	3 828	194 926	567 546	115 397	10 543	58.8	18 775	36.0	8 207	2.3	1 239 908
2001											
March quarter	3 830	196 559	568 961	114 459	10 189	57.7	18 459	36.1	8 031	2.3	1 191 842
Year ended March 2000	40 325	58.7	71 561	35.4	32 068	2.2	1 422 912
Year ended March 2001	41 180	58.0	73 193	35.4	32 064	2.3	1 477 386

(a) Comprising establishments with 15 or more rooms or units. See Explanatory Notes, paragraph 7.

STAR GRADING

Period	Licensed	Motels	Serviced	STAR GRADING					Ungraded	Total
	hotels with facilities	and guest houses	apartments	1	2	3	4	5		
ESTABLISHMENTS, CAPACITY AND EMPLOYMENT (number)										
March quarter 2000										
Establishments	767	2 411	611	69	508	1 825	805	87	495	3 789
Guest rooms	73 760	85 821	31 542	2 122	14 552	71 153	62 661	21 508	19 127	191 123
Bed spaces	197 179	254 335	107 951	6 672	43 379	213 429	184 349	57 035	54 601	559 465
Persons employed	72 728	31 464	10 807	860	5 996	29 470	36 527	34 997	7 149	114 999
March quarter 2001										
Establishments	781	2 400	649	63	462	1 862	892	98	453	3 830
Guest rooms	77 626	84 432	34 501	2 040	13 420	70 568	70 314	23 463	16 754	196 559
Bed spaces	205 020	248 795	115 146	6 510	39 562	209 390	204 756	60 776	47 967	568 961
Persons employed	72 670	29 917	11 872	727	5 301	27 345	39 383	35 252	6 451	114 459
ROOM NIGHTS OCCUPIED ('000)										
2000										
March quarter	4 238.7	4 137.8	1 711.6	66.0	588.9	3 586.5	3 703.7	1 393.1	749.7	10 088.1
2001										
January	1 422.6	1 320.3	690.8	21.9	175.5	1 182.1	1 349.9	482.1	222.2	3 433.7
February	1 381.3	1 178.9	557.8	18.9	144.2	1 026.7	1 266.2	467.4	194.5	3 118.0
March	1 583.0	1 408.0	645.9	22.2	177.5	1 225.6	1 460.2	522.3	229.0	3 636.8
March quarter	4 386.9	3 907.2	1 894.4	62.9	497.2	3 434.5	4 076.3	1 471.8	645.7	10 188.5
ROOM OCCUPANCY RATES (%)										
2000										
March quarter	63.3	53.1	60.0	34.2	44.6	55.4	65.0	71.3	44.2	58.2
2001										
January	59.1	50.5	64.7	34.6	42.2	54.0	62.0	66.3	43.0	56.4
February	63.6	50.0	57.8	33.1	38.4	52.0	64.4	71.1	41.6	56.7
March	65.8	53.9	60.4	35.0	42.7	56.0	67.1	71.8	44.2	59.7
March quarter	62.8	51.5	61.1	34.3	41.2	54.1	64.5	69.7	43.0	57.7
GUEST NIGHTS ('000)										
2000										
March quarter	6 949.6	7 295.0	3 791.9	114.8	1 063.9	6 635.1	6 563.3	2 333.6	1 325.8	18 036.5
2001										
January	2 604.1	2 626.2	1 716.1	37.3	346.7	2 474.9	2 744.3	894.6	448.6	6 946.4
February	2 173.7	1 965.2	1 127.3	27.5	246.5	1 808.6	2 108.4	743.3	332.0	5 266.2
March	2 518.6	2 390.4	1 339.2	35.2	308.7	2 184.7	2 478.9	839.8	400.9	6 248.1
March quarter	7 296.4	6 981.8	4 182.5	99.9	901.9	6 468.1	7 331.6	2 477.7	1 181.4	18 460.7
BED OCCUPANCY RATES (%)										
2000										
March quarter	38.9	31.6	38.8	18.9	27.1	34.2	39.1	45.0	27.4	35.5
2001										
January	41.0	34.1	48.2	18.5	28.3	38.1	43.3	47.5	30.3	39.4
February	37.9	28.3	35.0	15.1	22.3	30.8	36.8	43.7	24.8	33.1
March	39.7	31.0	37.5	17.4	25.2	33.7	39.1	44.6	27.0	35.5
March quarter	39.6	31.2	40.4	17.1	25.3	34.3	39.8	45.3	27.5	36.1

(a) Comprising establishments with 15 or more rooms or units. See Explanatory Notes, paragraph 7.

2

ACCOMMODATION ESTABLISHMENTS (a)—Australia *continued*

STAR GRADING

Period	Licensed hotels with facilities	Motels and guest houses	Serviced apartments	1	2	3	4	5	Ungraded	Total
GUEST ARRIVALS ('000)										
2000										
March quarter	2 989.1	3 946.8	995.0	59.3	602.3	3 222.9	2 690.3	826.2	529.8	7 930.8
2001										
January	1 009.4	1 419.7	426.3	20.2	194.7	1 189.2	995.1	294.8	161.4	2 855.5
February	936.1	1 099.2	322.9	15.7	142.0	908.2	877.1	284.9	130.3	2 358.1
March	1 088.6	1 336.7	392.5	20.5	177.9	1 108.1	1 033.3	319.7	158.2	2 817.7
March quarter	3 034.1	3 855.6	1 141.6	56.4	514.5	3 205.5	2 905.5	899.4	450.0	8 031.3
AVERAGE LENGTH OF STAY (days)										
2000										
March quarter	2.3	1.8	3.8	1.9	1.8	2.1	2.4	2.8	2.5	2.3
2001										
March quarter	2.4	1.8	3.7	1.8	1.8	2.0	2.5	2.8	2.6	2.3
TAKINGS FROM ACCOMMODATION (\$'000)										
2000										
March quarter	556 825	337 890	193 602	3 617	35 785	300 781	433 149	251 013	63 972	1 088 317
2001										
January	197 895	119 208	88 866	1 425	11 973	108 088	169 475	92 814	22 195	405 970
February	195 574	101 861	65 055	1 135	8 971	87 211	157 371	90 324	17 478	362 490
March	225 687	121 661	76 034	1 340	11 261	104 282	182 476	103 185	20 838	423 382
March quarter	619 156	342 730	229 956	3 899	32 205	299 581	509 322	286 323	60 512	1 191 842
AVERAGE TAKINGS PER ROOM NIGHT OCCUPIED (\$)										
2000										
March quarter	131.4	81.7	113.1	54.8	60.8	83.9	116.9	180.2	85.3	107.9
2001										
January	139.0	90.3	128.7	65.0	68.2	91.4	125.5	192.5	99.9	118.2
February	141.6	86.4	116.6	60.1	62.2	85.0	124.3	193.2	89.9	116.3
March	142.6	86.4	117.7	60.5	63.4	85.1	125.0	197.6	91.0	116.4
March quarter	141.1	87.7	121.4	61.9	64.8	87.2	124.9	194.5	93.7	117.0
AVERAGE TAKINGS PER AVAILABLE ROOM NIGHT (\$)										
2000										
March quarter	83.2	43.3	67.9	18.7	27.1	46.5	76.0	128.4	37.7	62.8
2001										
January	82.3	45.6	83.3	22.5	28.8	49.4	77.9	127.6	43.0	66.7
February	90.3	43.2	67.4	19.9	23.9	44.3	80.1	137.5	37.4	66.0
March	93.8	46.5	71.1	21.2	27.1	47.7	83.8	141.9	40.2	69.5
March quarter	88.7	45.2	74.1	21.2	26.7	47.2	80.6	135.6	40.3	67.5

(a) Comprising establishments with 15 or more rooms or units. See Explanatory Notes, paragraph 7.

STAR GRADING

Period	Licensed hotels with facilities	Motels and guest houses	Serviced apartments	1	2	3	4	5	Ungraded	Total
ESTABLISHMENTS, CAPACITY AND EMPLOYMENT (number)										
March quarter 2000										
Establishments	181	1 001	124	34	193	669	197	20	193	1 306
Guest rooms	22 046	33 587	6 334	1 221	5 448	24 294	17 956	5 334	7 714	61 967
Bed spaces	55 185	100 907	22 161	4 232	16 386	71 869	50 420	12 575	22 771	178 253
Persons employed	20 815	12 564	2 432	347	1 933	9 505	12 129	9 470	2 427	35 811
March quarter 2001										
Establishments	198	993	137	31	178	703	219	26	171	1 328
Guest rooms	25 039	32 810	7 792	1 199	5 108	25 457	20 835	6 912	6 130	65 641
Bed spaces	61 760	97 578	25 479	4 270	15 079	74 420	57 224	15 818	18 006	184 817
Persons employed	21 659	11 514	2 979	281	1 723	9 487	12 783	10 048	1 830	36 152
ROOM NIGHTS OCCUPIED ('000)										
2000										
March quarter	1 369.6	1 662.9	355.5	35.4	244.8	1 293.4	1 153.0	368.5	292.9	3 388.1
2001										
January	460.6	527.4	153.0	12.6	76.6	440.5	415.2	126.1	70.0	1 141.0
February	489.1	457.2	131.9	11.0	60.7	383.3	412.6	145.8	64.8	1 078.2
March	523.0	534.5	144.3	12.7	74.3	442.4	447.7	151.6	73.2	1 201.9
March quarter	1 472.8	1 519.0	429.3	36.3	211.6	1 266.3	1 275.4	423.5	208.1	3 421.1
ROOM OCCUPANCY RATES (%)										
2000										
March quarter	68.4	54.5	62.6	31.9	49.4	58.5	70.6	75.9	42.8	60.3
2001										
January	59.3	51.9	63.3	34.0	48.4	55.8	64.3	58.8	37.2	56.1
February	69.8	49.8	60.5	32.7	42.5	53.8	70.7	75.4	37.9	58.7
March	67.4	52.6	59.8	34.1	46.9	56.1	69.3	70.7	38.5	59.1
March quarter	65.4	51.5	61.2	33.6	46.0	55.3	68.0	68.1	37.9	57.9
GUEST NIGHTS ('000)										
2000										
March quarter	2 156.7	2 985.8	741.6	60.1	452.5	2 368.6	1 922.9	564.5	515.7	5 884.2
2001										
January	812.5	1 068.9	349.8	21.7	153.2	930.9	776.3	218.7	130.4	2 231.2
February	759.1	761.3	248.9	16.4	105.1	671.1	651.6	222.0	103.2	1 769.4
March	811.7	904.4	274.7	19.1	130.9	777.8	712.6	232.1	118.3	1 990.8
March quarter	2 383.4	2 734.5	873.5	57.2	389.2	2 379.8	2 140.5	672.8	351.9	5 991.4
BED OCCUPANCY RATES (%)										
2000										
March quarter	43.1	32.6	37.1	15.6	30.3	36.2	41.9	49.3	25.5	36.4
2001										
January	42.4	35.4	44.3	16.4	32.8	40.4	43.8	44.6	23.5	39.0
February	43.9	27.9	34.9	13.7	24.9	32.2	40.7	50.1	20.5	34.2
March	42.4	29.9	34.8	14.5	28.0	33.7	40.2	47.3	21.2	34.7
March quarter	42.9	31.2	38.1	14.9	28.7	35.5	41.6	47.3	21.8	36.0

(a) Comprising establishments with 15 or more rooms or units. See Explanatory Notes, paragraph 7.

3

ACCOMMODATION ESTABLISHMENTS (a)—NSW *continued*

STAR GRADING

Period	Licensed hotels with facilities	Motels and guest houses	Serviced apartments	1	2	3	4	5	Ungraded	Total
GUEST ARRIVALS ('000)										
2000										
March quarter	933.1	1 710.2	221.0	30.4	261.8	1 234.7	882.2	214.3	240.9	2 864.3
2001										
January	311.2	622.0	96.8	11.9	88.3	481.5	311.1	82.4	54.5	1 029.9
February	309.5	453.0	75.9	9.6	62.3	354.7	276.6	89.9	45.4	838.4
March	337.8	544.3	88.0	11.2	76.9	420.0	311.3	96.4	54.3	970.1
March quarter	958.4	1 619.3	260.6	32.7	227.5	1 256.2	899.0	268.7	154.2	2 838.3
AVERAGE LENGTH OF STAY (days)										
2000										
March quarter	2.3	1.7	3.4	2.0	1.7	1.9	2.2	2.6	2.1	2.1
2001										
March quarter	2.5	1.7	3.4	1.8	1.7	1.9	2.4	2.5	2.3	2.1
TAKINGS FROM ACCOMMODATION (\$'000)										
2000										
March quarter	207 791	141 007	49 072	2 137	15 520	115 424	153 862	86 110	24 816	397 869
2001										
January	69 991	49 609	23 762	904	5 444	42 572	57 993	29 919	6 530	143 363
February	78 973	40 790	19 171	739	3 901	34 748	58 187	35 732	5 628	138 934
March	82 958	47 108	20 793	833	4 865	39 465	62 610	36 806	6 280	150 859
March quarter	231 922	137 507	63 727	2 477	14 209	116 786	178 789	102 457	18 438	433 156
AVERAGE TAKINGS PER ROOM NIGHT OCCUPIED (\$) (b)										
2000										
March quarter	151.7	84.8	138.0	60.3	63.4	89.2	133.4	233.7	84.7	117.4
2001										
January	152.0	94.1	155.3	71.7	71.1	96.6	139.7	237.3	93.3	125.6
February	161.5	89.2	145.3	67.3	64.2	90.7	141.0	245.0	86.8	128.9
March	158.6	88.1	144.1	65.8	65.5	89.2	139.9	242.8	85.8	125.5
March quarter	157.5	90.5	148.4	68.3	67.2	92.2	140.2	241.9	88.6	126.6
AVERAGE TAKINGS PER AVAILABLE ROOM NIGHT (\$) (b)										
2000										
March quarter	103.8	46.2	86.3	19.2	31.3	52.2	94.2	177.4	36.2	70.8
2001										
January	90.2	48.9	98.4	24.3	34.4	53.9	89.8	139.6	34.7	70.5
February	112.6	44.4	87.9	22.0	27.3	48.7	99.7	184.6	32.9	75.6
March	106.9	46.3	86.1	22.4	30.7	50.0	96.9	171.8	33.0	74.1
March quarter	102.9	46.6	90.9	23.0	30.9	51.0	95.3	164.7	33.6	73.4

(a) Comprising establishments with 15 or more rooms or units. See Explanatory Notes, paragraph 7.

4

ACCOMMODATION ESTABLISHMENTS (a)—Vic.

STAR GRADING

<i>Period</i>	<i>Licensed hotels with facilities</i>	<i>Motels and guest houses</i>	<i>Serviced apartments</i>	<i>1</i>	<i>2</i>	<i>3</i>	<i>4</i>	<i>5</i>	<i>Ungraded</i>	<i>Total</i>
ESTABLISHMENTS, CAPACITY AND EMPLOYMENT (number)										
March quarter 2000										
Establishments	125	506	76	9	81	376	173	15	53	707
Guest rooms	10 895	16 254	4 183	217	2 126	12 078	11 502	3 456	1 953	31 332
Bed spaces	26 282	47 232	12 620	585	6 586	34 610	30 749	7 783	5 821	86 134
Persons employed	14 016	5 904	1 578	125	780	4 467	6 552	8 771	803	21 498
March quarter 2001										
Establishments	127	497	82	8	69	369	198	17	45	706
Guest rooms	11 797	15 599	4 627	259	1 786	11 567	12 886	3 838	1 687	32 023
Bed spaces	28 178	45 180	13 827	742	5 456	33 032	34 407	8 472	5 076	87 185
Persons employed	14 444	5 714	1 732	72	709	4 231	7 123	8 969	786	21 890
ROOM NIGHTS OCCUPIED ('000)										
2000										
<i>March quarter</i>	704.0	796.5	272.8	6.7	80.3	605.9	740.0	249.5	91.0	1 773.4
2001										
January	230.4	244.0	99.1	3.4	21.3	190.9	245.0	85.5	27.4	573.4
February	237.6	226.5	92.6	3.0	17.4	167.7	255.5	85.9	27.3	556.8
March	276.6	273.1	107.3	3.7	21.5	205.1	296.9	98.1	31.8	657.0
<i>March quarter</i>	744.6	743.7	298.9	10.0	60.2	563.7	797.3	269.4	86.6	1 787.2
ROOM OCCUPANCY RATES (%)										
2000										
<i>March quarter</i>	71.0	53.9	72.1	34.0	41.5	55.1	70.7	79.3	52.0	62.3
2001										
January	63.1	50.5	70.3	41.7	38.4	53.2	61.7	71.8	53.3	58.0
February	72.1	51.9	71.8	40.7	34.8	51.8	70.9	79.9	58.8	62.2
March	75.8	56.6	74.8	45.6	38.8	57.3	74.3	82.5	61.9	66.3
<i>March quarter</i>	70.3	53.0	72.3	42.7	37.4	54.2	68.9	78.0	58.0	62.1
GUEST NIGHTS ('000)										
2000										
<i>March quarter</i>	1 064.8	1 399.8	517.8	13.0	151.6	1 094.6	1 217.4	360.1	145.8	2 982.4
2001										
January	379.1	489.5	210.6	4.5	43.1	389.7	460.8	127.4	53.7	1 079.2
February	347.4	380.3	162.7	3.8	31.3	292.3	396.5	119.5	47.0	890.4
March	419.6	470.5	194.8	4.9	40.0	366.2	471.1	146.1	56.6	1 084.9
<i>March quarter</i>	1 146.1	1 340.3	568.1	13.1	114.5	1 048.3	1 328.4	393.0	157.3	3 054.5
BED OCCUPANCY RATES (%)										
2000										
<i>March quarter</i>	44.5	32.6	45.4	24.5	25.3	34.8	43.5	50.8	28.1	38.1
2001										
January	43.5	35.0	50.1	19.5	25.5	38.1	43.6	48.5	34.7	40.1
February	44.2	30.1	42.3	18.1	20.5	31.6	41.2	50.4	33.7	36.5
March	48.2	33.7	45.4	21.3	23.7	35.8	44.2	55.6	36.6	40.2
<i>March quarter</i>	45.3	33.0	46.1	19.7	23.3	35.3	43.0	51.5	35.0	39.0

(a) Comprising establishments with 15 or more rooms or units. See Explanatory Notes, paragraph 7.

4

ACCOMMODATION ESTABLISHMENTS (a)—Vic. *continued*

STAR GRADING

Period	Licensed hotels with facilities	Motels and guest houses	Serviced apartments	1	2	3	4	5	Ungraded	Total
GUEST ARRIVALS ('000)										
2000										
March quarter	480.7	776.5	148.2	7.6	91.6	556.6	551.5	146.4	51.5	1 405.4
2001										
January	165.1	264.0	55.2	2.5	24.5	191.3	199.2	48.9	17.8	484.3
February	164.3	217.3	50.9	2.1	18.5	150.8	190.6	52.5	17.9	432.4
March	186.6	267.5	58.3	3.2	23.7	191.4	218.8	54.9	20.4	512.4
March quarter	515.9	748.8	164.4	7.7	66.7	533.6	608.7	156.3	56.1	1 429.1
AVERAGE LENGTH OF STAY (days)										
2000										
March quarter	2.2	1.8	3.5	1.7	1.7	2.0	2.2	2.5	2.8	2.1
2001										
March quarter	2.2	1.8	3.5	1.7	1.7	2.0	2.2	2.5	2.8	2.1
TAKINGS FROM ACCOMMODATION (\$'000)										
2000										
March quarter	105 501	r 69 674	37 811	367	5 026	49 555	r 94 267	52 547	11 224	r 212 986
2001										
January	35 043	23 364	14 937	206	1 418	17 638	32 070	17 916	4 094	73 343
February	37 523	21 273	13 433	178	1 105	14 405	34 065	18 627	3 850	72 229
March	48 003	25 905	16 398	227	1 378	18 204	42 193	23 656	4 648	90 305
March quarter	120 569	70 541	44 768	611	3 901	50 247	108 328	60 199	12 592	235 877
AVERAGE TAKINGS PER ROOM NIGHT OCCUPIED (\$)										
2000										
March quarter	149.8	r 87.5	138.6	54.6	62.6	81.8	r 127.4	210.6	123.3	r 120.1
2001										
January	152.1	95.8	150.8	61.4	66.7	92.4	130.9	209.6	149.3	127.9
February	157.9	93.9	145.1	60.4	63.5	85.9	133.3	217.0	140.8	129.7
March	173.5	94.8	152.8	61.9	64.2	88.8	142.1	241.1	145.9	137.4
March quarter	161.9	94.9	149.8	61.3	64.9	89.1	135.9	223.4	145.4	132.0
AVERAGE TAKINGS PER AVAILABLE ROOM NIGHT (\$)										
2000										
March quarter	106.4	r 47.1	99.9	18.6	26.0	45.1	r 90.1	167.1	64.2	r 74.8
2001										
January	96.0	48.3	106.0	25.6	25.6	49.2	80.8	150.6	79.6	74.1
February	113.9	48.7	104.2	24.6	22.1	44.5	94.6	173.3	82.8	80.7
March	131.6	53.7	114.3	28.2	24.9	50.9	105.6	198.8	90.3	91.1
March quarter	113.8	50.3	108.3	26.2	24.3	48.3	93.7	174.3	84.3	82.0

(a) Comprising establishments with 15 or more rooms or units. See Explanatory Notes, paragraph 7.

STAR GRADING

<i>Period</i>	<i>Licensed hotels with facilities</i>	<i>Motels and guest houses</i>	<i>Serviced apartments</i>	<i>1</i>	<i>2</i>	<i>3</i>	<i>4</i>	<i>5</i>	<i>Ungraded</i>	<i>Total</i>
ESTABLISHMENTS, CAPACITY AND EMPLOYMENT (number)										
March quarter 2000										
Establishments	172	513	255	11	111	410	268	31	109	940
Guest rooms	20 530	18 523	12 768	265	2 808	16 087	19 736	8 281	4 644	51 821
Bed spaces	63 504	55 016	44 325	755	8 506	52 562	62 049	25 790	13 183	162 845
Persons employed	20 740	6 570	3 921	121	1 365	6 733	9 369	11 898	1 745	31 231
March quarter 2001										
Establishments	170	515	272	9	99	414	293	32	110	957
Guest rooms	20 589	18 459	13 475	209	2 476	15 268	21 935	8 068	4 567	52 523
Bed spaces	63 000	54 711	46 302	561	7 568	48 606	68 883	25 093	13 302	164 013
Persons employed	20 097	6 257	4 071	88	1 153	5 715	10 281	11 490	1 698	30 425
ROOM NIGHTS OCCUPIED ('000)										
2000										
<i>March quarter</i>	1 093.7	859.0	617.5	10.7	105.3	782.8	1 007.8	485.2	178.4	2 570.2
2001										
January	396.2	282.6	273.8	2.5	31.9	255.4	416.0	177.5	69.3	952.6
February	322.0	253.0	193.5	2.1	25.3	208.7	334.7	143.8	54.0	768.5
March	386.7	303.7	223.7	2.2	30.1	249.2	400.3	168.5	63.8	914.2
<i>March quarter</i>	1 104.9	839.3	691.0	6.8	87.3	713.2	1 151.0	489.8	187.1	2 635.2
ROOM OCCUPANCY RATES (%)										
2000										
<i>March quarter</i>	58.7	51.1	53.4	44.5	41.6	53.5	56.1	64.6	43.3	54.7
2001										
January	62.1	49.5	65.6	38.7	41.9	54.0	61.3	71.0	49.1	58.6
February	55.9	49.3	51.3	35.4	36.7	48.8	54.7	63.7	42.3	52.4
March	60.7	53.4	53.5	34.2	39.2	52.6	59.1	67.4	45.3	56.3
<i>March quarter</i>	59.7	50.8	57.0	36.1	39.4	51.9	58.5	67.5	45.7	55.9
GUEST NIGHTS ('000)										
2000										
<i>March quarter</i>	2 058.3	1 503.3	1 571.4	22.2	192.2	1 530.9	2 082.6	964.9	340.2	5 133.0
2001										
January	832.9	550.2	761.2	6.0	62.6	560.5	975.1	381.3	158.8	2 144.3
February	574.7	419.4	446.3	3.5	43.4	384.1	640.7	266.0	102.7	1 440.5
March	685.8	508.7	527.5	6.1	51.8	458.2	778.4	303.4	124.1	1 722.0
<i>March quarter</i>	2 093.5	1 478.3	1 735.1	15.6	157.9	1 402.8	2 394.2	950.7	385.6	5 306.8
BED OCCUPANCY RATES (%)										
2000										
<i>March quarter</i>	35.7	30.1	39.1	32.3	25.0	32.0	36.9	41.3	29.0	34.7
2001										
January	42.6	32.5	53.0	34.6	26.8	37.2	45.7	49.0	38.6	42.2
February	32.6	27.5	34.4	22.3	20.6	28.2	33.3	37.9	27.7	31.4
March	35.2	30.1	36.8	35.0	22.1	30.4	36.6	39.0	30.3	33.9
<i>March quarter</i>	36.9	30.1	41.6	30.9	23.2	32.1	38.7	42.1	32.3	36.0

(a) Comprising establishments with 15 or more rooms or units. See Explanatory Notes, paragraph 7.

5

ACCOMMODATION ESTABLISHMENTS (a)—Qld *continued*

STAR GRADING

Period	Licensed hotels with facilities	Motels and guest houses	Serviced apartments	1	2	3	4	5	Ungraded	Total
GUEST ARRIVALS ('000)										
2000										
March quarter	736.4	718.3	329.1	10.1	109.6	613.6	657.1	288.5	105.0	1 783.9
2001										
January	259.1	266.4	153.4	2.7	35.9	215.7	270.8	105.4	48.5	678.9
February	213.0	211.5	105.5	1.7	25.5	162.1	218.0	86.8	35.9	530.0
March	258.6	254.9	126.6	2.8	30.7	193.8	265.2	105.0	42.5	640.1
March quarter	730.7	732.8	385.5	7.3	92.1	571.6	753.9	297.2	126.9	1 849.0
AVERAGE LENGTH OF STAY (days)										
2000										
March quarter	2.8	2.1	4.8	2.2	1.8	2.5	3.2	3.3	3.2	2.9
2001										
March quarter	2.9	2.0	4.5	2.1	1.7	2.5	3.2	3.2	3.0	2.9
TAKINGS FROM ACCOMMODATION (\$'000)										
2000										
March quarter	130 362	62 424	60 160	509	6 083	63 296	95 683	72 364	15 010	252 946
2001										
January	55 449	23 249	31 409	144	2 104	22 285	46 827	31 449	7 297	110 107
February	40 829	19 506	17 989	91	1 486	15 949	33 490	22 669	4 640	78 324
March	49 401	23 638	20 945	107	1 784	19 395	40 061	27 023	5 613	93 983
March quarter	145 679	66 393	70 343	342	5 374	57 629	120 378	81 141	17 551	282 414
AVERAGE TAKINGS PER ROOM NIGHT OCCUPIED (\$)										
2000										
March quarter	119.2	72.7	97.4	47.4	57.7	80.9	94.9	149.1	84.1	98.4
2001										
January	139.6	82.3	114.7	57.4	65.9	86.9	112.6	177.2	105.3	115.5
February	126.9	77.1	93.0	43.8	58.8	76.5	100.1	157.6	86.0	101.9
March	128.0	77.8	93.6	48.1	59.2	78.1	100.1	160.4	87.9	102.9
March quarter	131.8	79.1	101.8	50.3	61.5	80.8	104.6	165.7	93.8	107.2
AVERAGE TAKINGS PER AVAILABLE ROOM NIGHT (\$)										
2000										
March quarter	69.9	37.2	52.1	21.1	24.0	43.2	53.3	96.4	36.4	53.8
2001										
January	86.9	40.8	75.2	22.3	27.6	47.1	69.0	125.7	51.7	67.7
February	71.6	38.0	47.7	15.5	21.6	37.8	54.8	100.3	36.4	53.6
March	77.5	41.5	50.1	16.5	23.2	41.0	59.2	108.0	39.8	57.8
March quarter	78.9	40.2	58.0	18.2	24.2	42.1	61.2	111.7	42.9	59.9

(a) Comprising establishments with 15 or more rooms or units. See Explanatory Notes, paragraph 7.

STAR GRADING

Period	Licensed hotels with facilities	Motels and guest houses	Serviced apartments	1	2	3	4	5	Ungraded	Total
ESTABLISHMENTS, CAPACITY AND EMPLOYMENT (number)										
March quarter 2000										
Establishments	62	146	26	7	55	117	41	4	10	234
Guest rooms	4 065	5 168	1 213	205	1 519	4 553	2 645	1 263	261	10 446
Bed spaces	10 163	15 597	4 422	539	4 271	13 331	8 656	2 588	797	30 182
Persons employed	4 093	1 996	462	164	831	2 317	1 822	1 291	126	6 551
March quarter 2001										
Establishments	62	146	27	7	51	116	47	4	10	235
Guest rooms	3 905	5 217	1 280	160	1 497	4 256	2 946	1 263	280	10 402
Bed spaces	9 727	15 666	4 485	387	4 154	12 561	9 411	2 572	793	29 878
Persons employed	4 045	2 018	480	163	764	2 251	1 923	1 300	142	6 543
ROOM NIGHTS OCCUPIED ('000)										
2000										
March quarter	221.6	260.0	69.1	5.7	56.2	229.4	158.6	88.6	12.1	550.7
2001										
January	63.8	85.9	25.4	1.1	17.9	71.7	54.8	25.1	4.5	175.1
February	66.0	79.1	22.7	1.0	15.7	65.4	54.3	28.0	3.3	167.7
March	80.7	94.4	29.3	1.2	19.6	80.3	65.0	33.5	4.8	204.3
March quarter	210.4	259.4	77.3	3.3	53.2	217.3	174.1	86.6	12.5	547.1
ROOM OCCUPANCY RATES (%)										
2000										
March quarter	60.1	55.3	62.6	30.6	41.1	55.4	65.9	77.1	50.9	58.0
2001										
January	52.7	53.1	63.9	23.1	38.5	54.3	60.0	64.2	51.3	54.3
February	60.3	54.1	63.2	22.7	37.4	54.8	65.9	79.2	42.1	57.6
March	66.6	58.4	73.7	23.7	42.3	60.8	71.1	85.6	55.0	63.4
March quarter	59.9	55.2	67.1	23.2	39.5	56.7	65.7	76.2	49.7	58.4
GUEST NIGHTS ('000)										
2000										
March quarter	332.1	452.8	138.0	8.5	100.0	403.9	271.7	115.4	23.4	922.9
2001										
January	109.8	167.4	58.4	1.8	33.6	142.7	110.0	37.3	10.2	335.6
February	94.6	128.9	41.8	1.3	25.9	108.3	87.1	36.2	6.4	265.2
March	116.3	156.8	56.5	1.7	32.3	136.4	104.7	44.6	9.9	329.6
March quarter	320.6	453.1	156.7	4.9	91.8	387.3	301.8	118.2	26.5	930.4
BED OCCUPANCY RATES (%)										
2000										
March quarter	36.1	31.9	34.3	17.4	26.0	33.3	34.5	49.0	32.3	33.7
2001										
January	36.4	34.5	42.0	15.0	26.1	36.6	37.7	46.8	41.4	36.2
February	34.7	29.4	33.3	12.3	22.3	30.8	33.1	50.3	28.9	31.7
March	38.6	32.3	40.6	14.5	25.1	35.0	35.9	56.0	40.1	35.6
March quarter	36.6	32.1	38.8	14.0	24.6	34.3	35.6	51.1	37.1	34.6

(a) Comprising establishments with 15 or more rooms or units. See Explanatory Notes, paragraph 7.

6

ACCOMMODATION ESTABLISHMENTS (a)—SA *continued*

STAR GRADING

<i>Period</i>	<i>Licensed hotels with facilities</i>	<i>Motels and guest houses</i>	<i>Serviced apartments</i>	1	2	3	4	5	<i>Ungraded</i>	<i>Total</i>
GUEST ARRIVALS ('000)										
2000										
<i>March quarter</i>	155.1	255.8	47.4	5.5	55.4	216.6	122.7	50.0	8.2	458.3
2001										
January	50.2	90.8	16.6	1.0	19.6	74.4	42.4	15.4	4.8	157.6
February	48.0	71.0	15.4	0.7	15.3	57.6	41.2	17.2	2.3	134.4
March	55.6	86.8	20.0	1.2	18.6	72.5	46.9	19.4	3.8	162.4
<i>March quarter</i>	153.7	248.6	52.0	2.9	53.5	204.5	130.5	52.0	10.9	454.3
AVERAGE LENGTH OF STAY (days)										
2000										
<i>March quarter</i>	2.1	1.8	2.9	1.5	1.8	1.9	2.2	2.3	2.9	2.0
2001										
<i>March quarter</i>	2.1	1.8	3.0	1.7	1.7	1.9	2.3	2.3	2.4	2.0
TAKINGS FROM ACCOMMODATION (\$'000)										
2000										
<i>March quarter</i>	23 738	19 956	6 739	261	2 955	16 907	17 321	12 142	847	50 433
2001										
January	7 204	7 172	2 576	49	1 055	5 668	6 383	3 450	348	16 952
February	7 794	6 554	2 263	36	894	5 006	6 487	3 943	245	16 611
March	9 556	7 810	2 987	46	1 133	6 163	7 490	5 170	351	20 353
<i>March quarter</i>	24 555	21 536	7 825	132	3 083	16 836	20 360	12 563	943	53 916
AVERAGE TAKINGS PER ROOM NIGHT OCCUPIED (\$)										
2000										
<i>March quarter</i>	107.1	76.7	97.6	45.7	52.5	73.7	109.2	137.0	70.0	91.6
2001										
January	112.9	83.5	101.5	43.0	59.0	79.1	116.4	137.4	78.1	96.8
February	118.2	82.9	99.8	35.5	57.1	76.6	119.4	140.8	74.2	99.1
March	118.5	82.7	102.1	39.4	57.7	76.8	115.3	154.3	73.4	99.6
<i>March quarter</i>	116.7	83.0	101.2	39.5	58.0	77.5	116.9	145.0	75.3	98.5
AVERAGE TAKINGS PER AVAILABLE ROOM NIGHT (\$)										
2000										
<i>March quarter</i>	64.4	42.4	61.1	14.0	21.6	40.8	72.0	105.6	35.7	53.1
2001										
January	59.5	44.3	64.9	10.0	22.7	43.0	69.9	88.1	40.1	52.6
February	71.3	44.9	63.1	8.1	21.3	42.0	78.6	111.5	31.2	57.0
March	78.9	48.3	75.3	9.3	24.4	46.7	82.0	132.0	40.4	63.1
<i>March quarter</i>	69.9	45.9	67.9	9.1	22.9	44.0	76.8	110.5	37.4	57.6

(a) Comprising establishments with 15 or more rooms or units. See Explanatory Notes, paragraph 7.

7

ACCOMMODATION ESTABLISHMENTS (a)—WA

STAR GRADING

<i>Period</i>	<i>Licensed hotels with facilities</i>	<i>Motels and guest houses</i>	<i>Serviced apartments</i>	<i>1 and Ungraded</i>	<i>2</i>	<i>3</i>	<i>4</i>	<i>5</i>	<i>Total</i>
ESTABLISHMENTS, CAPACITY AND EMPLOYMENT (number)									
March quarter 2000									
Establishments	134	121	68	98	24	127	61	13	323
Guest rooms	9 477	5 766	3 603	3 187	846	7 276	5 138	2 399	18 846
Bed spaces	23 571	15 525	12 469	7 900	2 201	19 896	14 999	6 569	51 565
Persons employed	6 932	2 013	1 190	1 548	429	2 808	2 858	2 492	10 135
March quarter 2001									
Establishments	132	125	70	85	23	135	69	15	327
Guest rooms	9 532	5 830	3 895	2 838	778	7 439	5 595	2 607	19 257
Bed spaces	24 039	15 843	13 149	7 080	1 969	20 539	16 343	7 100	53 031
Persons employed	6 672	1 960	1 395	1 474	363	2 821	2 944	2 425	10 027
ROOM NIGHTS OCCUPIED ('000)									
2000									
<i>March quarter</i>	489.5	249.4	193.4	122.7	30.5	324.5	294.6	159.9	932.3
2001									
January	160.9	85.1	75.2	34.9	8.0	115.9	105.2	57.2	321.2
February	152.1	72.6	59.0	30.0	6.7	100.2	95.5	51.2	283.7
March	177.8	88.0	72.0	37.8	8.5	121.3	113.7	56.5	337.8
<i>March quarter</i>	490.8	245.8	206.2	102.7	23.2	337.4	314.5	164.9	942.7
ROOM OCCUPANCY RATES (%)									
2000									
<i>March quarter</i>	56.9	47.6	59.4	43.1	39.7	49.0	63.0	73.2	54.5
2001									
January	54.4	47.1	62.3	39.7	33.1	50.2	60.7	70.8	53.8
February	57.0	44.5	54.1	37.7	30.8	48.1	61.0	70.2	52.6
March	60.2	48.7	59.6	43.0	35.1	52.6	65.6	69.9	56.6
<i>March quarter</i>	57.2	46.8	58.8	40.2	33.1	50.4	62.5	70.3	54.4
GUEST NIGHTS ('000)									
2000									
<i>March quarter</i>	758.0	428.2	434.1	206.1	50.4	587.9	503.7	272.1	1 620.2
2001									
January	275.2	163.5	188.0	62.4	15.1	224.1	211.6	113.5	626.7
February	222.3	118.6	119.9	45.7	10.3	167.0	154.3	83.5	460.8
March	269.8	147.9	153.6	59.7	13.2	210.0	193.4	94.9	571.2
<i>March quarter</i>	767.2	430.0	461.5	167.8	38.6	601.1	559.3	291.8	1 658.7
BED OCCUPANCY RATES (%)									
2000									
<i>March quarter</i>	35.4	30.4	38.5	29.2	25.2	32.5	36.9	45.5	34.6
2001									
January	36.9	33.3	46.1	28.4	24.7	35.2	41.8	51.5	38.1
February	33.0	26.7	32.6	23.0	18.7	29.0	33.7	42.0	31.0
March	36.2	30.1	37.7	27.2	21.6	33.0	38.2	43.1	34.7
<i>March quarter</i>	35.5	30.2	39.0	26.3	21.8	32.5	38.0	45.7	34.8

(a) Comprising establishments with 15 or more rooms or units. See Explanatory Notes, paragraph 7.

7

ACCOMMODATION ESTABLISHMENTS (a)—WA *continued*

STAR GRADING

Period	Licensed hotels with facilities	Motels and guest houses	Serviced apartments	1 and Ungraded	2	3	4	5	Total
GUEST ARRIVALS ('000)									
2000									
March quarter	351.5	195.1	119.2	89.3	23.1	252.0	207.2	94.1	665.8
2001									
January	114.6	78.0	51.9	22.9	7.1	100.8	80.4	33.4	244.5
February	95.8	59.4	36.1	18.6	5.2	75.6	62.9	29.0	191.2
March	120.1	72.2	47.6	24.8	6.8	91.9	82.7	33.6	239.9
March quarter	330.6	209.6	135.5	66.2	19.1	268.3	226.0	96.0	675.6
AVERAGE LENGTH OF STAY (days)									
2000									
March quarter	2.2	2.2	3.6	2.3	2.2	2.3	2.4	2.9	2.4
2001									
March quarter	2.3	2.1	3.4	2.5	2.0	2.2	2.5	3.0	2.5
TAKINGS FROM ACCOMMODATION (\$'000)									
2000									
March quarter	51 318	19 378	19 105	7 503	2 133	25 309	32 576	22 281	89 801
2001									
January	17 951	7 205	9 019	2 553	649	9 861	12 432	8 681	34 176
February	17 300	5 744	5 868	1 845	478	7 955	11 061	7 573	28 912
March	19 746	7 046	7 358	2 398	602	9 642	13 111	8 398	34 151
March quarter	54 997	19 996	22 245	6 796	1 729	27 457	36 604	24 652	97 238
AVERAGE TAKINGS PER ROOM NIGHT OCCUPIED (\$)									
2000									
March quarter	104.8	77.7	98.8	61.1	69.9	78.0	110.6	139.4	96.3
2001									
January	111.6	84.6	119.9	73.1	81.3	85.1	118.1	151.7	106.4
February	113.7	79.1	99.4	61.5	71.2	79.4	115.8	147.9	101.9
March	111.1	80.0	102.2	63.4	71.2	79.5	115.3	148.7	101.1
March quarter	112.1	81.4	107.9	66.1	74.7	81.4	116.4	149.5	103.1
AVERAGE TAKINGS PER AVAILABLE ROOM NIGHT (\$)									
2000									
March quarter	59.6	37.0	58.6	26.3	27.7	38.2	69.7	102.1	52.5
2001									
January	60.7	39.9	74.7	29.0	26.9	42.8	71.7	107.4	57.2
February	64.8	35.2	53.8	23.2	21.9	38.2	70.6	103.7	53.6
March	66.8	39.0	60.9	27.3	25.0	41.8	75.6	103.9	57.2
March quarter	64.1	38.1	63.5	26.6	24.7	41.0	72.7	105.1	56.1

(a) Comprising establishments with 15 or more rooms or units. See Explanatory Notes, paragraph 7.

STAR GRADING

Period	Licensed hotels with facilities	Motels and guest houses	Serviced apartments	1 and ungraded	2	3	4 and 5	Total
ESTABLISHMENTS, CAPACITY AND EMPLOYMENT (number)								
March quarter 2000								
Establishments	55	51	25	11	15	73	32	131
Guest rooms	2 931	1 747	892	337	415	2 993	1 825	5 570
Bed spaces	8 082	5 415	3 523	925	1 069	9 354	5 672	17 020
Persons employed	3 027	754	439	155	232	2 186	1 647	4 220
March quarter 2001								
Establishments	54	49	25	9	16	71	32	128
Guest rooms	2 915	1 667	880	248	510	2 636	2 068	5 462
Bed spaces	7 999	5 163	3 224	759	1 329	8 099	6 199	16 386
Persons employed	2 822	721	437	205	245	1 312	2 218	3 980
ROOM NIGHTS OCCUPIED ('000)								
2000								
March quarter	172.8	103.4	58.8	11.2	16.4	181.0	126.3	334.9
2001								
January	56.0	33.8	20.6	3.6	5.7	54.1	46.9	110.4
February	53.6	31.0	17.0	3.6	5.4	49.3	43.3	101.6
March	64.7	37.5	20.8	3.5	7.1	60.7	51.8	123.0
March quarter	174.3	102.4	58.4	10.7	18.2	164.1	142.0	335.1
ROOM OCCUPANCY RATES (%)								
2000								
March quarter	65.0	65.0	72.4	36.7	43.4	66.7	76.0	66.2
2001								
January	62.0	65.4	75.6	47.1	36.2	66.3	73.2	65.2
February	65.7	66.5	68.9	51.8	37.9	66.8	74.8	66.5
March	71.6	72.6	76.4	45.6	44.7	74.2	80.8	72.7
March quarter	66.4	68.2	73.8	48.0	39.7	69.2	76.3	68.2
GUEST NIGHTS ('000)								
2000								
March quarter	292.4	196.3	130.8	25.7	25.2	350.6	218.0	619.4
2001								
January	100.6	70.9	52.2	9.2	9.0	117.4	88.0	223.6
February	86.4	59.4	36.8	7.3	8.7	95.2	71.4	182.6
March	105.2	71.8	45.0	7.2	12.0	116.2	86.5	222.0
March quarter	292.1	202.1	133.9	23.8	29.7	328.8	245.9	628.2
BED OCCUPANCY RATES (%)								
2000								
March quarter	39.9	39.8	40.8	30.5	25.9	41.3	42.2	40.1
2001								
January	40.6	44.3	52.2	39.2	21.8	46.7	45.8	44.0
February	38.6	41.1	40.8	34.4	23.3	42.0	41.1	39.8
March	42.4	44.9	45.0	30.7	29.2	46.3	45.0	43.7
March quarter	40.6	43.5	46.2	34.8	24.8	45.1	44.1	42.6

(a) Comprising establishments with 15 or more rooms or units. See Explanatory Notes, paragraph 7.

STAR GRADING

Period	Licensed hotels with facilities	Motels and guest houses	Serviced apartments	1 and ungraded	2	3	4 and 5	Total
GUEST ARRIVALS ('000)								
2000								
March quarter	164.3	112.0	56.6	12.8	17.5	190.5	112.0	332.8
2001								
January	56.5	36.7	21.6	4.3	5.9	64.5	40.1	114.7
February	51.1	33.0	16.9	3.4	5.4	56.7	35.6	101.1
March	62.4	39.8	20.1	3.7	7.4	69.5	41.7	122.3
March quarter	170.1	109.5	58.6	11.4	18.7	190.7	117.3	338.1
AVERAGE LENGTH OF STAY (days)								
2000								
March quarter	1.8	1.8	2.3	2.0	1.4	1.8	1.9	1.9
2001								
March quarter	1.7	1.8	2.3	2.1	1.6	1.7	2.1	1.9
TAKINGS FROM ACCOMMODATION (\$'000)								
2000								
March quarter	15 184	8 629	6 233	886	790	14 639	13 732	30 046
2001								
January	5 424	3 204	2 484	321	324	4 708	5 757	11 111
February	5 077	2 794	1 975	294	319	4 031	5 202	9 845
March	6 153	3 406	2 396	304	442	4 946	6 263	11 955
March quarter	16 653	9 403	6 855	919	1 085	13 685	17 222	32 911
AVERAGE TAKINGS PER ROOM NIGHT OCCUPIED (\$)								
2000								
March quarter	87.9	83.4	106.1	78.8	48.2	80.9	108.7	89.7
2001								
January	96.9	94.8	120.4	88.6	56.7	87.0	122.7	100.6
February	94.7	90.0	116.3	81.8	59.0	81.7	120.1	96.9
March	95.1	90.8	115.0	86.7	62.5	81.5	120.9	97.2
March quarter	95.6	91.9	117.3	85.7	59.6	83.4	121.3	98.2
AVERAGE TAKINGS PER AVAILABLE ROOM NIGHT (\$)								
2000								
March quarter	57.1	54.3	76.8	28.9	20.9	53.9	82.7	59.4
2001								
January	60.0	62.0	91.1	41.8	20.5	57.6	89.8	65.6
February	62.2	59.9	80.1	42.4	22.3	54.6	89.8	64.4
March	68.1	65.9	87.8	39.5	28.0	60.5	97.7	70.6
March quarter	63.5	62.7	86.5	41.2	23.6	57.7	92.5	66.9

(a) Comprising establishments with 15 or more rooms or units. See Explanatory Notes, paragraph 7.

STAR GRADING

<i>Period</i>	<i>Licensed hotels with facilities</i>	<i>Motels and guest houses</i>	<i>Serviced apartments</i>	<i>1 and Ungraded</i>	<i>2</i>	<i>3</i>	<i>4 and 5</i>	<i>Total</i>
ESTABLISHMENTS, CAPACITY AND EMPLOYMENT (number)								
March quarter 2000								
Establishments	23	48	18	20	20	33	16	89
Guest rooms	1 938	3 073	1 171	626	803	2 471	2 282	6 182
Bed spaces	5 501	9 319	3 719	1 785	2 446	7 487	6 821	18 539
Persons employed	1 788	1 072	370	235	251	980	1 764	3 230
March quarter 2001								
Establishments	23	50	17	22	19	33	16	90
Guest rooms	1 941	3 164	1 142	724	785	2 463	2 275	6 247
Bed spaces	5 488	9 446	3 900	2 029	2 412	7 572	6 821	18 834
Persons employed	1 646	1 107	370	296	250	956	1 621	3 123
ROOM NIGHTS OCCUPIED ('000)								
2000								
<i>March quarter</i>	86.1	125.7	55.4	20.1	25.2	97.1	124.8	267.2
2001								
January	25.4	35.7	15.8	7.6	6.4	30.8	32.2	76.8
February	28.4	35.3	15.0	6.4	5.8	29.8	36.7	78.7
March	32.8	45.8	18.5	7.4	7.6	39.6	42.5	97.0
<i>March quarter</i>	86.6	116.7	49.2	21.4	19.7	100.2	111.3	252.6
ROOM OCCUPANCY RATES (%)								
2000								
<i>March quarter</i>	48.8	45.2	52.0	35.7	35.0	43.2	60.1	47.7
2001								
January	42.3	36.3	44.5	33.6	26.2	40.3	45.6	39.7
February	52.3	39.8	46.9	31.7	26.4	43.2	57.6	45.0
March	54.4	46.7	52.2	33.0	31.1	51.9	60.2	50.1
<i>March quarter</i>	49.6	41.0	47.9	32.8	27.9	45.2	54.4	44.9
GUEST NIGHTS ('000)								
2000								
<i>March quarter</i>	138.9	190.7	101.1	32.7	39.7	165.2	193.2	430.7
2001								
January	42.8	64.7	33.1	13.9	11.4	60.4	54.8	140.6
February	42.9	59.4	27.2	11.5	9.1	54.5	54.6	129.6
March	53.6	79.1	32.9	13.0	12.1	72.9	67.5	165.6
<i>March quarter</i>	139.3	203.2	93.2	38.4	32.6	187.7	176.9	435.7
BED OCCUPANCY RATES (%)								
2000								
<i>March quarter</i>	27.7	22.6	29.9	20.4	18.1	24.2	31.1	25.6
2001								
January	25.2	22.1	27.4	22.2	15.2	25.7	25.9	24.1
February	27.9	22.5	25.0	20.2	13.4	25.7	28.6	24.6
March	31.5	27.0	27.2	20.7	16.2	31.0	31.9	28.4
<i>March quarter</i>	28.2	23.9	26.6	21.1	15.0	27.5	28.8	25.7

(a) Comprising establishments with 15 or more rooms or units. See Explanatory Notes, paragraph 7.

9

ACCOMMODATION ESTABLISHMENTS (a)—NT *continued*

STAR GRADING

Period	Licensed hotels with facilities	Motels and guest houses	Serviced apartments	1 and Ungraded	2	3	4 and 5	Total
GUEST ARRIVALS ('000)								
2000								
March quarter	85.9	101.7	32.9	14.1	21.8	92.5	92.1	220.5
2001								
January	26.7	36.4	12.1	6.4	7.0	35.0	26.9	75.2
February	27.6	33.2	11.0	5.0	5.3	32.5	28.9	71.7
March	33.1	43.5	14.0	6.1	7.5	42.5	34.3	90.5
March quarter	87.4	113.0	37.1	17.6	19.8	110.0	90.1	237.5
AVERAGE LENGTH OF STAY (days)								
2000								
March quarter	1.6	1.9	3.1	2.3	1.8	1.8	2.1	2.0
2001								
March quarter	1.6	1.8	2.5	2.2	1.6	1.7	2.0	1.8
TAKINGS FROM ACCOMMODATION (\$'000)								
2000								
March quarter	11 203	10 431	5 297	1 315	1 347	9 972	14 297	26 931
2001								
January	3 297	3 225	1 536	474	417	3 299	3 867	8 058
February	3 721	3 197	1 493	407	351	3 153	4 499	8 410
March	4 355	4 189	1 864	495	497	4 169	5 248	10 408
March quarter	11 372	10 611	4 893	1 377	1 265	10 621	13 614	26 876
AVERAGE TAKINGS PER ROOM NIGHT OCCUPIED (\$)								
2000								
March quarter	130.1	83.0	95.6	65.4	53.4	102.7	114.6	100.8
2001								
January	129.6	90.5	97.4	62.8	65.4	107.2	120.3	104.9
February	130.8	90.6	99.6	63.3	60.6	105.8	122.6	106.9
March	133.0	91.5	100.9	66.8	65.6	105.3	123.6	107.3
March quarter	131.3	90.9	99.4	64.3	64.1	106.1	122.3	106.4
AVERAGE TAKINGS PER AVAILABLE ROOM NIGHT (\$)								
2000								
March quarter	63.5	37.5	49.7	23.4	18.7	44.3	68.8	48.0
2001								
January	54.8	32.9	43.4	21.1	17.1	43.2	54.8	41.6
February	68.5	36.1	46.7	20.1	16.0	45.7	70.6	48.1
March	72.4	42.7	52.7	22.1	20.4	54.6	74.4	53.7
March quarter	65.1	37.3	47.6	21.1	17.9	47.9	66.5	47.8

(a) Comprising establishments with 15 or more rooms or units. See Explanatory Notes, paragraph 7.

STAR GRADING

<i>Period</i>	<i>Licensed hotels with facilities</i>	<i>Motels and guest houses</i>	<i>Serviced apartments</i>	<i>1 and ungraded</i>	<i>2</i>	<i>3</i>	<i>4 and 5</i>	<i>Total</i>
ESTABLISHMENTS, CAPACITY AND EMPLOYMENT (number)								
March quarter 2000								
Establishments	15	25	19	9	9	20	21	59
Guest rooms	1 878	1 703	1 378	619	587	1 401	2 352	4 959
Bed spaces	4 891	5 324	4 712	1 980	1 914	4 320	6 713	14 927
Persons employed	1 317	591	415	213	175	474	1 461	2 323
March quarter 2001								
Establishments	15	25	19	9	7	21	22	59
Guest rooms	1 908	1 686	1 410	493	480	1 482	2 549	5 004
Bed spaces	4 829	5 208	4 780	1 472	1 595	4 561	7 189	14 817
Persons employed	1 285	626	408	143	94	572	1 510	2 319
ROOM NIGHTS OCCUPIED ('000)								
2000								
<i>March quarter</i>	101.3	80.9	89.1	28.8	30.1	72.3	140.1	271.3
2001								
January	29.3	25.9	27.9	7.2	7.7	22.9	45.3	83.1
February	32.5	24.2	26.2	6.9	7.2	22.4	46.3	82.8
March	40.7	30.9	30.0	9.0	8.9	27.1	56.6	101.6
<i>March quarter</i>	102.5	81.0	84.0	23.2	23.9	72.3	148.1	267.5
ROOM OCCUPANCY RATES (%)								
2000								
<i>March quarter</i>	61.5	52.2	71.0	57.3	56.4	56.7	65.4	60.9
2001								
January	49.6	49.5	63.8	47.0	51.9	49.8	57.3	53.6
February	60.7	51.3	66.2	50.3	53.9	53.9	64.8	59.1
March	68.8	59.1	68.6	59.1	59.7	59.0	71.6	65.5
<i>March quarter</i>	59.7	53.4	66.2	52.2	55.2	54.2	64.6	59.4
GUEST NIGHTS ('000)								
2000								
<i>March quarter</i>	148.4	138.1	157.1	47.2	52.3	133.5	210.6	443.7
2001								
January	51.2	51.2	62.7	13.2	18.7	49.2	84.0	165.1
February	46.4	37.9	43.5	10.6	12.7	36.1	68.3	127.8
March	56.6	51.1	54.2	15.4	16.3	47.0	83.4	162.0
<i>March quarter</i>	154.3	140.2	160.4	39.2	47.7	132.3	235.7	454.9
BED OCCUPANCY RATES (%)								
2000								
<i>March quarter</i>	34.8	28.5	36.6	29.3	30.0	34.0	34.5	33.1
2001								
January	34.2	31.7	42.3	28.9	37.8	34.8	37.7	35.9
February	34.3	26.0	32.5	25.7	28.5	28.3	33.9	30.8
March	37.8	31.7	36.6	33.8	33.0	33.2	37.4	35.3
<i>March quarter</i>	35.5	29.9	37.3	29.6	33.2	32.2	36.4	34.1

(a) Comprising establishments with 15 or more rooms or units. See Explanatory Notes, paragraph 7.

STAR GRADING

<i>Period</i>	<i>Licensed hotels with facilities</i>	<i>Motels and guest houses</i>	<i>Serviced apartments</i>	<i>1 and ungraded</i>	<i>2</i>	<i>3</i>	<i>4 and 5</i>	<i>Total</i>
GUEST ARRIVALS ('000)								
2000								
<i>March quarter</i>	82.1	77.1	40.8	13.8	21.6	66.3	98.3	199.9
2001								
January	26.0	25.6	18.7	4.4	6.4	26.0	33.5	70.3
February	26.9	20.8	11.3	3.3	4.4	18.2	33.1	58.9
March	34.4	27.7	18.0	4.8	6.2	26.4	42.7	80.1
<i>March quarter</i>	87.3	74.1	48.0	12.5	17.0	70.6	109.2	209.3
AVERAGE LENGTH OF STAY (days)								
2000								
<i>March quarter</i>	1.8	1.8	3.9	3.4	2.4	2.0	2.1	2.2
2001								
<i>March quarter</i>	1.8	1.9	3.3	3.1	2.8	1.9	2.2	2.2
TAKINGS FROM ACCOMMODATION (\$'000)								
2000								
<i>March quarter</i>	11 727	6 392	9 185	2 714	1 931	5 679	16 980	27 305
2001								
January	3 536	2 181	3 143	698	561	2 056	5 545	8 860
February	4 357	2 002	2 865	661	436	1 965	6 162	9 224
March	5 516	2 560	3 292	877	561	2 299	7 631	11 368
<i>March quarter</i>	13 409	6 743	9 300	2 235	1 558	6 320	19 339	29 452
AVERAGE TAKINGS PER ROOM NIGHT OCCUPIED (\$)								
2000								
<i>March quarter</i>	115.8	79.0	103.1	94.2	64.1	78.6	121.2	100.7
2001								
January	120.5	84.3	112.8	97.0	72.6	89.9	122.4	106.6
February	134.3	82.7	109.6	95.2	60.3	87.9	133.2	111.4
March	135.5	82.9	109.8	97.1	63.1	84.9	134.9	111.9
<i>March quarter</i>	130.8	83.3	110.7	96.5	65.3	87.4	130.5	110.1
AVERAGE TAKINGS PER AVAILABLE ROOM NIGHT (\$)								
2000								
<i>March quarter</i>	71.2	41.2	73.3	54.0	36.1	44.5	79.3	61.3
2001								
January	59.8	41.7	71.9	45.6	37.7	44.7	70.2	57.1
February	81.6	42.4	72.6	47.9	32.5	47.4	86.3	65.8
March	93.2	49.0	75.3	57.4	37.7	50.0	96.6	73.3
<i>March quarter</i>	78.1	44.4	73.3	50.4	36.1	47.4	84.3	65.4

(a) Comprising establishments with 15 or more rooms or units. See Explanatory Notes, paragraph 7.

Period	South Coast	Illawarra	Sydney	Snowy Mountains	Capital Country	The Murray	Riverina	Explorer Country
ESTABLISHMENTS, CAPACITY AND EMPLOYMENT (number)								
March quarter 2000								
Establishments	81	32	278	59	68	98	69	122
Guest rooms	1 984	1 110	30 492	2 357	2 133	2 849	1 946	3 526
Bed spaces	6 184	3 504	77 997	9 044	6 185	9 199	5 751	11 027
Persons employed	630	661	22 564	363	917	945	681	1 253
March quarter 2001								
Establishments	81	33	298	59	68	99	68	122
Guest rooms	1 998	1 123	33 728	2 361	2 147	2 876	1 932	3 541
Bed spaces	6 143	3 497	83 796	9 344	6 356	9 057	5 707	10 910
Persons employed	656	692	23 261	325	835	960	684	1 223
ROOM NIGHTS OCCUPIED ('000)								
2000								
March quarter	101.3	59.6	1 980.0	32.4	89.5	134.8	92.4	152.1
2001								
January	38.3	22.0	641.9	12.8	30.0	43.8	28.8	47.6
February	28.0	19.0	677.1	8.3	26.4	36.4	27.7	42.7
March	32.6	21.7	718.8	10.5	33.0	49.1	34.1	54.5
March quarter	98.9	62.8	2 037.9	31.7	89.5	129.2	90.7	144.8
ROOM OCCUPANCY RATES (%)								
2000								
March quarter	56.1	59.0	71.7	15.4	46.1	52.0	52.2	47.4
2001								
January	63.7	63.3	61.4	17.5	45.1	49.1	48.2	43.3
February	50.8	60.5	71.7	12.6	43.9	45.2	51.3	43.0
March	52.6	62.5	68.7	14.4	49.7	55.0	56.9	49.7
March quarter	55.8	62.1	67.1	14.9	46.3	49.9	52.1	45.4
GUEST NIGHTS ('000)								
2000								
March quarter	204.1	105.6	3 225.0	66.9	159.4	255.5	152.7	270.5
2001								
January	86.7	46.4	1 154.4	30.8	58.4	95.9	52.3	94.8
February	53.1	31.3	1 073.7	17.0	44.6	65.3	42.6	67.4
March	61.4	34.9	1 142.5	21.1	55.7	89.0	52.9	91.2
March quarter	201.3	112.6	3 370.6	68.9	158.7	250.2	147.8	253.4
GUEST ARRIVALS ('000)								
2000								
March quarter	112.7	61.2	1 283.3	31.1	106.9	144.6	112.3	196.7
2001								
January	46.2	24.0	422.6	13.1	38.3	49.3	37.3	71.7
February	31.7	17.4	418.6	8.5	28.3	38.0	29.0	46.8
March	36.6	19.6	453.3	10.5	35.7	51.9	37.1	62.1
March quarter	114.5	61.1	1 294.5	32.0	102.3	139.2	103.4	180.6
TAKINGS FROM ACCOMMODATION (\$'000)								
2000								
March quarter	7 486	5 764	279 374	2 324	7 491	9 770	6 176	10 136
2001								
January	3 802	2 456	93 377	1 162	2 565	3 543	2 200	3 542
February	2 169	1 995	103 015	651	2 363	2 884	2 103	3 101
March	2 467	2 263	108 210	814	3 070	3 793	2 588	4 038
March quarter	8 438	6 713	304 602	2 628	7 998	10 219	6 891	10 681

<i>Period</i>	<i>Hunter</i>	<i>North Coast NSW</i>	<i>Northern Rivers Tropical NSW</i>	<i>Big Sky Country</i>	<i>The Living Outback</i>	<i>Central Coast</i>	<i>Blue Mountains</i>
ESTABLISHMENTS, CAPACITY AND EMPLOYMENT (number)							
March quarter 2000							
Establishments	98	127	77	88	37	38	34
Guest rooms	3 614	3 848	2 159	2 425	891	1 338	1 295
Bed spaces	11 754	12 518	6 917	7 286	2 606	4 519	3 762
Persons employed	2 131	1 860	690	819	270	950	1 077
March quarter 2001							
Establishments	100	124	75	90	38	40	33
Guest rooms	3 855	3 798	2 096	2 481	949	1 510	1 246
Bed spaces	12 293	12 284	6 580	7 433	2 772	5 128	3 517
Persons employed	2 206	1 636	676	824	291	907	976
ROOM NIGHTS OCCUPIED ('000)							
2000							
<i>March quarter</i>	169.6	204.6	99.1	108.8	32.3	73.2	58.3
2001							
January	60.2	81.4	37.8	37.5	10.6	28.7	19.4
February	55.3	53.3	26.4	29.6	10.0	21.2	16.7
March	61.9	58.9	30.0	40.0	14.1	21.6	21.1
<i>March quarter</i>	177.4	193.6	94.2	107.0	34.7	71.6	57.2
ROOM OCCUPANCY RATES (%)							
2000							
<i>March quarter</i>	51.6	58.4	50.4	49.3	39.8	60.1	49.5
2001							
January	50.4	69.2	58.1	48.7	36.1	61.3	50.2
February	51.3	50.2	45.0	42.6	37.5	50.2	47.8
March	51.8	50.0	46.1	52.0	48.0	46.2	54.6
<i>March quarter</i>	51.1	56.6	49.9	47.9	40.6	52.7	51.0
GUEST NIGHTS ('000)							
2000							
<i>March quarter</i>	313.0	436.7	194.8	190.3	52.5	151.4	105.8
2001							
January	130.8	190.9	86.9	74.3	18.2	71.5	39.0
February	94.9	103.4	47.5	45.5	14.8	40.5	27.7
March	109.7	111.3	54.0	66.0	22.7	42.2	36.2
<i>March quarter</i>	335.4	405.7	188.4	185.8	55.7	154.3	102.9
GUEST ARRIVALS ('000)							
2000							
<i>March quarter</i>	173.7	235.1	116.7	133.4	35.0	65.4	56.1
2001							
January	66.7	105.1	45.4	48.5	11.5	26.3	23.9
February	54.5	58.1	28.1	32.1	8.6	20.7	17.9
March	63.3	61.8	33.3	48.2	12.4	21.4	22.9
<i>March quarter</i>	184.5	225.0	106.8	128.8	32.5	68.4	64.6
TAKINGS FROM ACCOMMODATION (\$'000)							
2000							
<i>March quarter</i>	18 558	17 984	7 854	7 417	1 884	8 334	7 317
2001							
January	7 695	8 898	3 897	3 107	686	3 958	2 475
February	6 519	4 448	2 223	2 118	625	2 551	2 171
March	7 225	4 905	2 428	2 891	906	2 520	2 741
<i>March quarter</i>	21 439	18 250	8 548	8 116	2 217	9 028	7 388

Period	Melbourne	Wimmera	Mallee	Western	Western Grampians	Bendigo Loddon	Peninsula	Central Murray	Goulburn	High Country
ESTABLISHMENTS, CAPACITY AND EMPLOYMENT (number)										
March quarter 2000										
Establishments	230	6	43	56	20	31	20	21	27	72
Guest rooms	17 994	117	1 300	1 512	484	779	681	561	698	1 924
Bed spaces	45 252	335	3 964	4 657	1 394	2 375	1 800	1 705	2 070	7 035
Persons employed	15 583	29	486	788	204	362	403	161	371	572
March quarter 2001										
Establishments	235	6	42	53	20	31	21	21	27	72
Guest rooms	18 765	117	1 264	1 407	478	783	739	566	696	1 931
Bed spaces	47 198	331	3 791	4 326	1 368	2 382	1 972	1 657	2 006	6 803
Persons employed	15 926	28	576	772	216	349	408	158	373	553
ROOM NIGHTS OCCUPIED ('000)										
2000										
March quarter	1 201.9	3.9	53.4	89.8	20.9	37.2	31.1	26.4	32.3	49.1
2001										
January	383.9	1.2	17.9	32.5	6.0	10.8	12.3	9.2	9.3	17.8
February	392.1	1.1	14.9	24.8	6.6	12.0	11.6	6.8	9.3	12.0
March	454.3	1.5	19.1	28.1	8.4	14.9	12.2	8.4	12.5	16.8
March quarter	1 230.2	3.8	51.8	85.4	21.1	37.7	36.1	24.5	31.1	46.6
ROOM OCCUPANCY RATES (%)										
2000										
March quarter	73.4	36.6	45.1	65.3	47.5	54.2	50.2	51.8	50.9	28.0
2001										
January	66.3	33.9	45.6	74.5	40.4	44.4	53.8	52.5	43.3	30.1
February	74.7	33.8	42.0	63.0	49.7	54.7	55.8	43.2	47.8	22.6
March	78.1	40.0	48.8	64.5	57.0	61.3	53.3	47.8	58.0	28.8
March quarter	73.0	36.0	45.6	67.5	49.0	53.4	54.2	48.0	49.7	27.3
GUEST NIGHTS ('000)										
2000										
March quarter	1 931.4	6.2	92.2	181.5	35.1	67.6	50.1	50.4	52.8	100.0
2001										
January	674.5	2.2	33.8	75.0	11.0	22.3	27.4	19.4	16.9	39.9
February	601.5	1.8	23.4	47.8	10.1	20.4	20.3	12.3	14.8	24.1
March	721.7	2.3	30.9	52.9	13.7	27.4	21.0	15.9	20.9	33.1
March quarter	1 997.7	6.3	88.2	175.7	34.8	70.0	68.7	47.6	52.7	97.2
GUEST ARRIVALS ('000)										
2000										
March quarter	767.5	4.9	54.4	110.9	26.5	46.7	26.9	31.6	35.9	51.2
2001										
January	256.1	1.7	19.0	41.8	8.7	13.7	11.4	11.9	10.6	19.4
February	256.4	1.2	13.3	30.7	7.7	13.2	11.1	7.6	10.1	13.4
March	287.7	1.6	19.5	34.5	9.6	16.8	12.5	10.1	13.5	18.6
March quarter	800.2	4.5	51.7	106.9	25.9	43.7	35.0	29.5	34.2	51.5
TAKINGS FROM ACCOMMODATION (\$'000)										
2000										
March quarter	165 602	197	3 487	8 174	1 486	2 892	3 990	1 980	2 212	3 800
2001										
January	55 395	72	1 307	3 597	482	928	1 655	769	718	1 566
February	57 228	64	1 043	2 426	516	1 010	1 604	557	725	1 008
March	72 348	84	1 326	2 667	650	1 267	1 707	653	974	1 346
March quarter	184 971	219	3 676	8 690	1 648	3 205	4 966	1 979	2 417	3 920

Period	Lakes	Gippsland	Melbourne East	Geelong	Macedon	Spa Country	Ballarat	Central Highlands	Upper Yarra	Murray East	Phillip Island
ESTABLISHMENTS, CAPACITY AND EMPLOYMENT (number)											
March quarter 2000											
Establishments	25	34	15	22	4	5	24	15	13	14	10
Guest rooms	671	1 012	467	696	115	118	798	359	424	321	301
Bed spaces	1 987	3 039	1 084	2 129	243	320	2 501	1 130	1 077	973	1 064
Persons employed	256	314	441	381	85	74	391	102	262	78	155
March quarter 2001											
Establishments	24	35	14	22	3	5	25	14	13	13	10
Guest rooms	674	1 034	449	701	72	118	809	337	430	307	346
Bed spaces	1 964	3 056	1 047	1 984	163	284	2 607	1 032	1 087	929	1 198
Persons employed	243	293	472	360	73	108	426	93	256	74	133
ROOM NIGHTS OCCUPIED ('000)											
2000											
March quarter	30.6	36.6	17.2	38.3	3.7	5.7	37.9	13.1	13.2	13.0	18.0
2001											
January	11.6	10.1	4.3	12.8	0.4	1.4	11.8	4.2	3.7	4.2	7.9
February	7.7	10.4	5.2	13.1	0.9	1.6	11.4	3.6	3.0	3.8	5.0
March	9.8	14.4	5.7	13.3	0.9	1.9	14.5	5.4	4.7	4.8	5.5
March quarter	29.1	34.8	15.2	39.2	2.2	4.9	37.7	13.2	11.4	12.7	18.4
ROOM OCCUPANCY RATES (%)											
2000											
March quarter	50.7	39.8	40.5	60.5	35.6	53.1	52.2	40.2	34.2	44.4	65.6
2001											
January	55.7	31.4	31.0	58.9	19.5	39.3	47.2	40.6	27.7	44.4	73.6
February	40.5	35.9	41.3	66.7	44.0	47.7	50.2	37.7	25.1	43.8	51.8
March	47.0	44.8	40.8	61.4	41.2	51.8	57.9	51.2	35.1	50.0	51.4
March quarter	48.0	37.4	37.6	62.2	34.6	46.2	51.8	43.4	29.4	46.1	59.2
GUEST NIGHTS ('000)											
2000											
March quarter	59.8	56.5	25.0	66.9	4.6	9.6	78.5	27.0	20.9	23.6	42.7
2001											
January	27.3	17.9	7.0	26.1	0.7	2.4	28.1	8.6	6.5	8.3	23.8
February	14.3	15.3	7.4	21.0	1.2	2.5	22.6	7.1	4.5	6.3	11.7
March	18.7	22.5	8.4	22.8	1.3	3.0	28.9	10.8	7.3	8.1	13.4
March quarter	60.3	55.7	22.8	69.9	3.2	7.9	79.7	26.5	18.3	22.8	48.9
GUEST ARRIVALS ('000)											
2000											
March quarter	37.3	33.2	14.8	38.9	2.9	4.4	49.0	17.8	10.5	15.8	24.3
2001											
January	16.9	11.3	4.1	13.4	0.5	1.5	16.9	5.5	3.7	5.7	10.6
February	9.2	9.9	4.5	10.9	0.7	1.3	13.3	4.4	2.6	4.3	6.7
March	11.6	13.9	4.8	13.0	0.9	1.7	17.8	7.0	3.9	5.4	8.1
March quarter	37.7	35.1	13.5	37.3	2.1	4.4	48.1	16.9	10.1	15.3	25.4
TAKINGS FROM ACCOMMODATION (\$'000)											
2000											
March quarter	2 111	2 516	1 705	3 499	417	765	3 126	935	1 602	828	1 661
2001											
January	1 045	782	486	1 334	46	220	1 066	328	338	287	923
February	566	747	600	1 352	119	249	1 048	259	374	242	490
March	705	1 056	654	1 365	119	291	1 290	398	548	322	537
March quarter	2 316	2 585	1 739	4 050	284	759	3 405	985	1 260	851	1 950

<i>Period</i>	<i>Gold Coast</i>	<i>Brisbane</i>	<i>Sunshine Coast</i>	<i>Hervey Bay/ Maryborough</i>	<i>Darling Downs</i>	<i>Bundaberg</i>
ESTABLISHMENTS, CAPACITY AND EMPLOYMENT (number)						
March quarter 2000						
Establishments	146	161	95	44	61	24
Guest rooms	13 104	10 048	4 211	1 630	1 581	592
Bed spaces	43 450	28 415	14 475	5 545	4 950	1 771
Persons employed	8 534	6 999	2 416	725	578	199
March quarter 2001						
Establishments	148	163	98	42	64	25
Guest rooms	13 271	9 816	4 536	1 588	1 634	621
Bed spaces	43 715	27 484	15 471	5 453	5 189	1 895
Persons employed	8 610	6 743	2 369	713	585	178
ROOM NIGHTS OCCUPIED ('000)						
2000						
<i>March quarter</i>	773.2	492.1	202.5	71.0	65.8	28.3
2001						
January	324.7	161.0	98.0	20.3	20.9	8.6
February	224.8	161.2	57.9	17.0	20.6	8.7
March	255.8	189.5	66.2	21.0	26.0	10.0
<i>March quarter</i>	805.3	511.7	222.2	58.3	67.5	27.3
ROOM OCCUPANCY RATES (%)						
2000						
<i>March quarter</i>	64.9	54.2	52.8	47.8	45.7	52.5
2001						
January	78.9	53.1	69.7	41.3	41.2	44.8
February	60.5	58.7	45.8	38.2	45.1	49.9
March	62.2	62.3	47.3	42.7	51.2	52.0
<i>March quarter</i>	67.4	58.0	54.6	40.8	45.9	48.8
GUEST NIGHTS ('000)						
2000						
<i>March quarter</i>	1 805.9	784.1	512.5	157.5	113.9	48.7
2001						
January	820.8	288.9	288.8	41.6	40.1	17.5
February	494.3	247.4	137.4	28.9	34.2	14.6
March	565.5	291.1	161.1	37.6	43.3	16.7
<i>March quarter</i>	1 880.5	827.4	587.4	108.0	117.6	48.9
GUEST ARRIVALS ('000)						
2000						
<i>March quarter</i>	475.3	332.7	149.2	78.1	79.3	32.3
2001						
January	192.6	121.4	68.8	23.0	27.9	12.1
February	136.6	112.2	45.9	16.8	23.8	10.3
March	162.3	136.6	50.7	21.4	30.0	11.4
<i>March quarter</i>	491.5	370.2	165.4	61.2	81.7	33.8
TAKINGS FROM ACCOMMODATION (\$'000)						
2000						
<i>March quarter</i>	76 940	45 107	24 318	5 145	4 213	2 045
2001						
January	39 287	15 316	13 490	1 627	1 548	770
February	22 765	15 949	6 571	1 170	1 490	691
March	26 037	18 984	7 627	1 543	1 853	816
<i>March quarter</i>	88 089	50 249	27 688	4 341	4 892	2 277

<i>Period</i>	<i>Fitzroy</i>	<i>Mackay</i>	<i>Whitsundays</i>	<i>Northern</i>	<i>Tropical North Queensland</i>	<i>Outback</i>	<i>Great Barrier Reef</i>
ESTABLISHMENTS, CAPACITY AND EMPLOYMENT (number)							
March quarter 2000							
Establishments	81	52	18	55	150	53	19
Guest rooms	3 084	1 695	2 298	2 398	9 779	1 401	2 709
Bed spaces	9 921	5 039	8 262	6 978	30 090	3 949	9 289
Persons employed	1 626	907	2 012	1 473	5 242	520	2 560
March quarter 2001							
Establishments	86	52	18	55	154	52	17
Guest rooms	3 183	1 780	2 142	2 419	10 127	1 406	2 502
Bed spaces	10 238	5 200	7 582	7 035	30 760	3 991	8 592
Persons employed	1 639	942	1 841	1 363	4 907	535	2 365
ROOM NIGHTS OCCUPIED ('000)							
2000							
<i>March quarter</i>	133.0	80.3	119.0	111.2	440.5	53.5	142.4
2001							
January	49.1	25.0	45.1	32.3	155.0	13.6	51.8
February	43.3	22.6	28.3	34.4	133.7	15.6	31.6
March	52.4	26.4	36.5	38.7	170.4	20.4	40.4
<i>March quarter</i>	144.8	74.0	110.0	105.5	459.1	49.7	123.8
ROOM OCCUPANCY RATES (%)							
2000							
<i>March quarter</i>	48.0	52.0	56.9	50.9	49.8	42.4	58.8
2001							
January	49.8	45.2	68.0	43.1	49.5	31.2	66.8
February	48.5	45.4	52.1	52.9	47.2	39.7	51.2
March	53.1	47.9	55.0	53.7	54.3	46.9	54.2
<i>March quarter</i>	50.5	46.2	58.8	49.7	50.5	39.2	57.9
GUEST NIGHTS ('000)							
2000							
<i>March quarter</i>	222.7	137.5	263.2	172.9	838.3	75.8	310.9
2001							
January	93.5	48.6	107.2	56.4	319.4	20.4	124.5
February	66.2	35.3	57.8	50.1	252.9	20.7	67.3
March	79.5	43.5	77.0	56.7	321.9	27.8	87.2
<i>March quarter</i>	239.3	127.3	242.1	163.1	894.2	68.9	279.0
GUEST ARRIVALS ('000)							
2000							
<i>March quarter</i>	109.2	68.2	71.5	89.3	256.7	42.1	84.9
2001							
January	46.9	19.6	29.9	28.7	93.9	14.1	28.4
February	35.0	15.0	18.4	26.1	77.0	13.1	19.2
March	40.3	17.8	23.9	29.8	99.2	16.8	23.5
<i>March quarter</i>	122.1	52.5	72.2	84.6	270.0	43.9	71.1
TAKINGS FROM ACCOMMODATION (\$'000)							
2000							
<i>March quarter</i>	10 943	5 476	20 839	8 742	45 849	3 329	26 884
2001							
January	4 702	2 118	9 243	2 733	18 351	922	12 397
February	3 513	1 757	5 161	2 786	15 390	1 082	6 939
March	4 543	2 100	6 500	3 209	19 347	1 424	8 828
<i>March quarter</i>	12 758	5 974	20 903	8 729	53 088	3 427	28 164

Period	South East	Murray-lands	Fleurieu Peninsula	Adelaide	Adelaide Hills	Barossa Valley	Riverland	Clare Valley	Flinders Ranges	Outback SA	Eyre Peninsula	Yorke Peninsula	Kangaroo Island
ESTABLISHMENTS, CAPACITY AND EMPLOYMENT (number)													
March quarter 2000													
Establishments	32	4	17	85	4	8	14	5	18	8	25	8	6
Guest rooms	929	96	544	5 670	132	351	499	144	586	388	791	149	167
Bed spaces	2 784	299	1 713	15 948	390	1 033	1 513	447	1 769	1 086	2 295	437	468
Persons employed	429	41	339	3 611	132	271	517	96	231	175	540	62	107
March quarter 2001													
Establishments	32	4	16	86	4	9	14	5	19	8	24	8	6
Guest rooms	936	96	509	5 596	132	367	504	142	647	386	773	147	167
Bed spaces	2 791	303	1 630	15 800	334	1 024	1 536	441	1 907	1 001	2 186	452	473
Persons employed	442	40	315	3 572	149	258	511	94	271	186	532	70	103
ROOM NIGHTS OCCUPIED ('000)													
2000													
March quarter	46.5	3.8	24.1	350.2	6.7	16.0	18.6	7.3	22.5	11.1	30.2	5.5	8.3
2001													
January	17.4	1.3	8.7	106.5	2.1	5.8	5.9	2.1	6.9	3.1	10.0	2.0	3.4
February	14.4	1.2	5.7	109.7	1.9	5.1	4.7	2.0	6.6	2.8	9.9	1.4	2.6
March	17.9	1.3	6.7	131.5	2.6	6.1	6.8	2.6	8.6	3.9	11.3	1.7	3.4
March quarter	49.7	3.7	21.0	347.7	6.6	17.0	17.3	6.6	22.1	9.8	31.2	5.1	9.4
ROOM OCCUPANCY RATES (%)													
2000													
March quarter	55.0	43.9	48.7	67.9	55.6	50.1	40.9	55.4	42.2	31.3	42.8	40.5	54.7
2001													
January	59.9	43.3	54.9	61.4	52.4	50.7	37.6	46.8	34.6	25.6	41.6	44.8	66.0
February	54.8	43.3	39.8	70.0	50.6	49.5	33.1	49.0	36.4	26.0	45.7	32.9	55.5
March	61.8	43.4	42.1	75.8	64.0	53.9	43.2	58.8	42.8	32.7	47.3	36.4	65.9
March quarter	59.0	43.3	45.8	69.0	55.8	51.4	38.1	51.7	38.0	28.2	44.8	38.2	62.7
GUEST NIGHTS ('000)													
2000													
March quarter	79.4	8.0	55.3	568.4	12.0	29.6	31.4	13.0	38.1	16.7	45.4	9.3	16.3
2001													
January	32.6	2.7	22.6	198.6	4.9	12.7	11.6	4.2	12.3	5.1	16.6	4.4	7.4
February	21.8	1.9	12.8	170.7	3.3	9.0	7.2	3.2	10.5	4.1	13.5	2.1	4.9
March	28.4	2.3	14.0	209.2	4.9	10.9	10.1	4.6	14.1	5.7	16.3	2.7	6.4
March quarter	82.8	6.9	49.4	578.6	13.1	32.6	29.0	12.0	36.9	14.9	46.4	9.2	18.7
GUEST ARRIVALS ('000)													
2000													
March quarter	53.1	5.1	32.3	230.6	6.8	21.4	20.6	8.9	25.1	10.8	29.0	6.0	8.8
2001													
January	20.2	1.8	12.5	76.3	2.1	5.8	7.4	2.5	8.8	3.6	11.2	2.4	3.1
February	13.9	1.5	7.3	73.9	1.8	6.7	5.0	2.0	7.2	2.7	8.3	1.5	2.5
March	18.3	1.7	9.1	84.7	2.7	8.2	6.8	3.1	9.7	3.6	9.5	1.8	3.1
March quarter	52.4	5.0	29.0	234.9	6.6	20.7	19.2	7.7	25.7	9.8	28.9	5.6	8.7
TAKINGS FROM ACCOMMODATION (\$'000)													
2000													
March quarter	3 058	209	1 978	36 007	685	1 564	1 210	490	1 537	793	1 884	300	717
2001													
January	1 254	80	817	11 618	213	550	399	178	469	248	668	146	314
February	978	68	476	12 328	186	489	310	155	435	225	657	88	218
March	1 236	76	559	14 899	271	585	451	201	594	310	773	113	285
March quarter	3 468	224	1 851	38 845	669	1 624	1 161	534	1 497	782	2 098	346	816

Period	South East	Goldfields	Midwest	Gascoyne	Pilbara	Kimberley	Perth	Peel	South West	Great Southern	Wheatbelt
ESTABLISHMENTS, CAPACITY AND EMPLOYMENT (number)											
March quarter 2000											
Establishments	10	23	25	11	20	27	100	5	58	19	25
Guest rooms	295	1 031	838	504	1 421	1 448	9 290	251	2 370	691	707
Bed spaces	866	2 630	2 194	1 360	3 044	4 241	25 372	894	7 317	1 990	1 657
Persons employed	134	423	373	192	451	631	5 836	127	1 384	318	266
March quarter 2001											
Establishments	10	25	25	11	19	28	102	8	58	20	21
Guest rooms	280	1 066	876	504	1 447	1 521	9 356	456	2 390	763	598
Bed spaces	830	2 769	2 324	1 344	3 049	4 362	25 576	1 576	7 457	2 293	1 451
Persons employed	129	449	345	163	446	649	5 771	174	1 368	300	233
ROOM NIGHTS OCCUPIED ('000)											
2000											
March quarter	14.3	37.1	33.0	13.3	45.7	41.0	562.9	14.3	118.8	31.9	20.1
2001											
January	6.4	12.6	10.2	4.6	16.0	12.1	191.1	7.9	42.8	11.9	5.6
February	4.1	12.6	9.1	4.2	16.4	10.8	174.7	5.2	31.2	9.1	6.2
March	4.8	15.5	10.2	5.6	18.1	17.1	202.8	6.4	39.8	10.7	6.7
March quarter	15.3	40.7	29.6	14.4	50.5	40.0	568.7	19.6	113.8	31.7	18.5
ROOM OCCUPANCY RATES (%)											
2000											
March quarter	53.2	39.5	43.2	29.0	35.3	31.1	66.8	62.5	55.2	50.7	32.5
2001											
January	73.4	38.0	37.7	29.6	35.7	25.7	65.9	56.2	57.7	50.2	30.1
February	52.0	42.3	37.1	29.5	40.6	25.4	66.7	40.8	46.7	42.7	36.9
March	55.4	47.0	37.7	35.7	40.3	36.3	69.9	45.4	53.7	45.3	36.3
March quarter	60.5	42.4	37.5	31.7	38.8	29.2	67.5	47.7	52.9	46.2	34.4
GUEST NIGHTS ('000)											
2000											
March quarter	26.1	52.9	54.5	21.9	55.2	70.8	961.8	33.5	258.4	57.1	27.9
2001											
January	13.1	19.3	19.5	8.4	21.1	23.4	358.6	21.5	109.0	24.0	8.7
February	6.2	16.8	14.5	6.3	19.7	17.7	282.5	12.3	62.2	14.5	8.2
March	7.8	21.9	17.2	9.1	22.3	29.1	339.9	14.5	82.9	17.4	9.3
March quarter	27.0	58.0	51.2	23.8	63.0	70.3	980.9	48.3	254.1	55.8	26.2
GUEST ARRIVALS ('000)											
2000											
March quarter	12.3	29.1	26.6	9.8	22.6	18.7	368.5	16.9	112.3	31.4	17.6
2001											
January	5.0	10.0	9.9	3.6	8.3	6.1	130.3	6.9	46.6	12.1	5.7
February	2.8	7.7	7.9	2.7	7.8	5.3	106.4	5.5	32.0	8.0	5.2
March	3.4	9.2	8.9	3.5	8.3	8.9	132.0	6.3	42.9	9.7	6.7
March quarter	11.2	26.8	26.7	9.8	24.5	20.3	368.8	18.7	121.6	29.7	17.5
TAKINGS FROM ACCOMMODATION (\$'000)											
2000											
March quarter	979	2 803	2 198	994	3 253	3 598	59 430	1 354	11 535	2 562	1 096
2001											
January	484	1 006	755	410	1 234	1 116	21 374	920	5 381	1 127	369
February	286	1 011	665	335	1 284	891	19 684	473	3 138	769	374
March	345	1 210	738	440	1 417	1 456	22 417	593	4 179	936	420
March quarter	1 115	3 227	2 158	1 185	3 935	3 463	63 474	1 986	12 699	2 832	1 163

Period	Greater Hobart	Southern	East Coast	Northern	Greater Launceston	North West	West Coast
ESTABLISHMENTS, CAPACITY AND EMPLOYMENT (number)							
March quarter 2000							
Establishments	39	14	4	2	30	32	10
Guest rooms	2 129	460	n.p.	n.p.	1 363	984	412
Bed spaces	6 135	1 588	n.p.	n.p.	4 466	2 934	1 230
Persons employed	1 814	267	n.p.	n.p.	1 258	554	205
March quarter 2001							
Establishments	37	14	4	2	30	31	10
Guest rooms	2 040	462	n.p.	n.p.	1 350	972	416
Bed spaces	5 805	1 595	n.p.	n.p.	4 353	2 757	1 236
Persons employed	1 726	260	n.p.	n.p.	1 114	551	217
ROOM NIGHTS OCCUPIED ('000)							
2000							
March quarter	144.6	26.8	n.p.	n.p.	82.0	47.6	22.8
2001							
January	50.3	9.6	n.p.	n.p.	24.7	13.7	8.1
February	43.6	8.0	n.p.	n.p.	24.7	13.9	8.3
March	53.2	9.2	n.p.	n.p.	31.1	16.7	9.2
March quarter	147.0	26.9	n.p.	n.p.	80.5	44.4	25.5
ROOM OCCUPANCY RATES (%)							
2000							
March quarter	75.0	63.9	n.p.	n.p.	66.2	53.2	60.9
2001							
January	79.5	67.2	n.p.	n.p.	59.0	45.5	62.6
February	76.3	62.0	n.p.	n.p.	65.4	51.2	70.9
March	84.1	64.6	n.p.	n.p.	74.2	55.5	71.2
March quarter	80.1	64.7	n.p.	n.p.	66.2	50.7	68.2
GUEST NIGHTS ('000)							
2000							
March quarter	263.4	56.0	n.p.	n.p.	150.9	85.3	41.5
2001							
January	97.6	22.3	n.p.	n.p.	51.4	26.6	16.5
February	75.5	16.2	n.p.	n.p.	44.2	24.9	15.2
March	92.3	18.5	n.p.	n.p.	57.3	29.5	17.3
March quarter	265.4	57.0	n.p.	n.p.	152.9	81.1	49.0
GUEST ARRIVALS ('000)							
2000							
March quarter	112.4	41.3	n.p.	n.p.	85.9	53.0	27.1
2001							
January	37.9	15.3	n.p.	n.p.	29.7	15.9	10.2
February	33.1	12.5	n.p.	n.p.	25.2	15.5	10.2
March	39.2	14.7	n.p.	n.p.	32.0	20.0	11.3
March quarter	110.2	42.5	n.p.	n.p.	86.9	51.3	31.6
TAKINGS FROM ACCOMMODATION (\$'000)							
2000							
March quarter	13 801	2 422	n.p.	n.p.	7 011	4 222	1 861
2001							
January	5 369	1 036	n.p.	n.p.	2 317	1 393	690
February	4 503	833	n.p.	n.p.	2 303	1 341	642
March	5 615	898	n.p.	n.p.	2 828	1 597	761
March quarter	15 488	2 767	n.p.	n.p.	7 448	4 331	2 094

Period	Darwin	Kakadu	Arnhem	Katherine	Tablelands	Petermann	Alice Springs	MacDonnell	Daly	Canberra
ESTABLISHMENTS, CAPACITY AND EMPLOYMENT (number)										
March quarter 2000										
Establishments	34	3	3	10	7	7	22	2	1	59
Guest rooms	2 582	n.p.	n.p.	529	252	n.p.	1 579	n.p.	n.p.	4 959
Bed spaces	7 543	n.p.	n.p.	1 482	677	n.p.	4 964	n.p.	n.p.	14 927
Persons employed	1 448	n.p.	n.p.	204	68	n.p.	799	n.p.	n.p.	2 323
March quarter 2001										
Establishments	34	4	3	10	7	7	22	2	1	59
Guest rooms	2 591	n.p.	n.p.	529	254	n.p.	1 618	n.p.	n.p.	5 004
Bed spaces	7 811	n.p.	n.p.	1 512	725	n.p.	4 859	n.p.	n.p.	14 817
Persons employed	1 347	n.p.	n.p.	184	55	n.p.	775	n.p.	n.p.	2 319
ROOM NIGHTS OCCUPIED ('000)										
2000										
March quarter	127.8	n.p.	n.p.	15.3	5.4	n.p.	60.9	n.p.	n.p.	271.3
2001										
January	32.9	n.p.	n.p.	4.6	1.8	n.p.	19.9	n.p.	n.p.	83.1
February	33.5	n.p.	n.p.	4.3	1.7	n.p.	21.1	n.p.	n.p.	82.8
March	38.4	n.p.	n.p.	5.6	2.2	n.p.	28.1	n.p.	n.p.	101.6
March quarter	104.8	n.p.	n.p.	14.5	5.7	n.p.	69.2	n.p.	n.p.	267.5
ROOM OCCUPANCY RATES (%)										
2000										
March quarter	54.6	n.p.	n.p.	32.4	23.4	n.p.	42.4	n.p.	n.p.	60.9
2001										
January	40.9	n.p.	n.p.	28.1	22.3	n.p.	39.7	n.p.	n.p.	53.6
February	46.2	n.p.	n.p.	29.2	23.4	n.p.	46.6	n.p.	n.p.	59.1
March	47.8	n.p.	n.p.	33.9	28.5	n.p.	56.1	n.p.	n.p.	65.5
March quarter	44.9	n.p.	n.p.	30.4	24.8	n.p.	47.5	n.p.	n.p.	59.4
GUEST NIGHTS ('000)										
2000										
March quarter	195.7	n.p.	n.p.	27.5	9.4	n.p.	100.6	n.p.	n.p.	443.7
2001										
January	56.4	n.p.	n.p.	8.7	3.9	n.p.	36.5	n.p.	n.p.	165.1
February	50.2	n.p.	n.p.	7.9	2.9	n.p.	34.6	n.p.	n.p.	127.8
March	58.9	n.p.	n.p.	10.2	3.8	n.p.	47.9	n.p.	n.p.	162.0
March quarter	165.4	n.p.	n.p.	26.8	10.6	n.p.	119.0	n.p.	n.p.	454.9
GUEST ARRIVALS ('000)										
2000										
March quarter	78.4	n.p.	n.p.	14.7	8.5	n.p.	52.7	n.p.	n.p.	199.9
2001										
January	24.4	n.p.	n.p.	6.9	2.8	n.p.	17.5	n.p.	n.p.	70.3
February	23.0	n.p.	n.p.	6.0	2.1	n.p.	17.2	n.p.	n.p.	58.9
March	25.8	n.p.	n.p.	8.2	2.7	n.p.	23.9	n.p.	n.p.	80.1
March quarter	73.2	n.p.	n.p.	21.1	7.6	n.p.	58.6	n.p.	n.p.	209.3
TAKINGS FROM ACCOMMODATION (\$'000)										
2000										
March quarter	11 289	n.p.	n.p.	882	319	n.p.	4 607	n.p.	n.p.	27 305
2001										
January	2 974	n.p.	n.p.	323	143	n.p.	1 584	n.p.	n.p.	8 860
February	3 092	n.p.	n.p.	297	131	n.p.	1 746	n.p.	n.p.	9 224
March	3 525	n.p.	n.p.	400	173	n.p.	2 435	n.p.	n.p.	11 368
March quarter	9 591	n.p.	n.p.	1 021	446	n.p.	5 765	n.p.	n.p.	29 452

EXPLANATORY NOTES

INTRODUCTION

1 This publication contains data from the ABS quarterly Survey of Tourist Accommodation (STA). The STA is a mailout collection that completely enumerates all in-scope accommodation establishments.

2 From the March quarter 1998, the scope and collection strategy for the STA was changed to include only significant accommodation establishments (these are defined below).

SCOPE

3 On a quarterly basis, the STA includes hotels, resorts, motels, guest houses and serviced apartments with 15 or more rooms or units.

4 Every third year beginning with 2000, the STA expands to also include:

- holiday flats, units and houses of letting entities with 15 or more rooms or units;
- caravan parks with 40 or more powered sites;
- visitor hostels with 25 or more bed spaces.

5 The short-term non-residential accommodation which is in scope of the STA is accommodation which is not leased, and which is provided to guests who would generally stay for periods of less than two months.

6 Some establishments also provide long-term residential accommodation. For hotels, motels, guest houses and serviced apartments, the amount of such activity is considered to be insignificant and is included in the data presented in this publication.

DEFINITIONS OF ACCOMMODATION ESTABLISHMENTS

7 The STA includes the following categories of establishments which provide predominantly short-term non-residential accommodation to the general public:

- hotels and resorts with facilities - establishments with 15 or more rooms which are licensed to operate a public bar and which provide accommodation on a room/suite basis, with a bath/shower and toilet in most guest rooms, but which do not have full cooking facilities (i.e. hot plates and oven/microwave) in most guest rooms;
- motels, private hotels and guest houses with facilities - establishments with 15 or more rooms which are not licensed to operate a public bar, and which provide accommodation on a room/suite basis, with a bath/shower and toilet in most guest rooms, but which do not have full cooking facilities (i.e. hot plates and oven/microwave) in most guest rooms;
- serviced apartments - establishments with 15 or more units which mostly comprise self-contained units at the same location, and which are available on a unit/apartment basis to the general public for a minimum of one night; the units should have full cooking facilities (i.e. hot plates and oven/microwave), refrigerator and bath/shower and toilet facilities; all bed linen and towels should be provided, and daily servicing (i.e. cleaning and bed making) must be available through the on-site management, although this service may not necessarily be used.

EXPLANATORY NOTES *continued*

CLASSIFICATION CHANGES	<p>8 As a result of the separate classification of serviced apartments from the March quarter 1998, there have been several changes to definitions of accommodation units. Some units, which were formerly in categories such as hotels, motels or holiday flats, units and houses are now classified as serviced apartments. A small number of establishments which were previously classified as motels have been reclassified as holiday flats, units and houses and are therefore no longer in scope of the quarterly STA, except as described in paragraph 4.</p>
COVERAGE	<p>9 Coverage is comprehensive and from the December quarter 1999, has been obtained from the Australian Automobile Association accommodation guide, which is updated twice yearly. This is supplemented by notification of new tourism developments and their likely opening dates in selected guides, major tourism journals and periodicals and newspapers. Periodic comparison to lists of accommodation establishments provided by the various Tourism Commissions and Industry Associations is also undertaken.</p>
DATA QUALITY	<p>10 The survey does not have a sample component and the data are not subject to sampling variability. However, other inaccuracies collectively referred to as non-sampling error may affect the data. These non-sampling errors may arise from a number of sources, including:</p> <ul style="list-style-type: none">■ errors in the reporting of data by respondents;■ errors in the process of capturing data;■ estimation for missing data; and■ definition and classification errors. <p>Every effort has been made to reduce non-sampling error to a minimum by careful design and testing of questionnaires, and efficient operating procedures and systems used to compile statistics.</p> <p>11 The March quarter 2001 response rates were:</p> <ul style="list-style-type: none">■ 92% licensed hotels■ 91% motels and guest houses■ 94% serviced apartments
REGIONAL DATA	<p>12 Survey results are aggregated to Tourism Regions as defined by relevant State and Territory Tourist Commissions or equivalent organisations. Details of the composition of Tourism Regions, including maps, are available on request.</p>
ANNUAL CAPACITY DATA	<p>13 ABS releases counts of accommodation establishments and their capacity as at the end of December each year in respect of the pre-1998 scope of the survey (but recognising serviced apartments separately) as follows:</p> <ul style="list-style-type: none">■ hotels, motels and guest houses and serviced apartments with facilities and having five or more rooms;■ holiday flats, units and houses (other than those included with serviced apartments) which are operated by owners, managers or real estate agents who have sole letting rights to at least five flats, units or houses for short term letting;■ all caravan parks regardless of size; and■ all visitor hostels regardless of size. <p>14 As a result of classification changes applied from March quarter 1998 onward, data will not be comparable with that previously published for particular accommodation types.</p> <p>15 These counts are published annually in a quarterly issue of <i>Tourism Indicators, Australia</i> (Cat. no. 8634.0).</p>

EXPLANATORY NOTES *continued*

STATISTICS AVAILABLE ON REQUEST

16 The ABS makes tourist accommodation data available on request, including statistics for past quarters, for specific areas and specific data items. For example, detailed employment statistics showing the number of full-time, part-time or casual employees may be available. Normally such data is made available on a fee for service basis.

RELATED PUBLICATIONS

17 Other ABS publications and products which may be of interest include:

Directory of Tourism Statistics, 2000 (Cat. no. 1130.0) (irregular)

Overseas Arrivals and Departures, Australia (Cat. no. 3401.0) (issued monthly)

Tourism Indicators, Australia (Cat. no. 8634.0) (issued quarterly)

Tourist Accommodation, Small Area Data Standard Data Service (SDS) products for each State/Territory (except the ACT) (Cat. no. 8635.n.40.001) (issued quarterly).

18 Current publications produced by the ABS are listed in the *Catalogue of Publications and Products* (Cat. no. 1101.0). The ABS also issues the *Release Advice* (Cat. no. 1105.0) on Tuesdays and Fridays which lists publications to be released in the next few days. Both are available from any ABS office or the ABS web site.

EFFECTS OF ROUNDING

19 Where figures have been rounded, discrepancies may occur between totals and the sum of the component items.

TOURISM REGION CHANGES

20 From March quarter 2001 changes have been made to some Statistical Local Areas (SLA) and Tourism Regions (TR) in New South Wales and South Australia.

New South Wales areas that have changes:

The following Tourism Regions have had Statistical Local Area changes:

Illawarra, Capital Country, Mid North Coast, Hunter

The following Tourism Regions have had name changes:

Murray renamed The Murray

Central West renamed Explorer Country

Northern Rivers renamed Northern Rivers Tropical NSW

New England/North West renamed Big Sky Country

Outback renamed The Living Outback

Mid North Coast and Holiday Coast have merged and are now named North Coast NSW

South Australian areas that have changes:

The following Tourism Regions have had Statistical Local Area changes:

Adelaide, Fleurieu Peninsula, Mid North, Yorke Peninsular, Flinders Ranges, Murraylands and South East

The following Tourism Region has had a name change:

Far North renamed Outback SA

The following new Tourism Regions have been created:

Adelaide Hills and Clare Valley

Further details of these changes may be found in:

Tourist Accommodation, Small Area Data, New South Wales (Cat. no. 8635.1.40.001)

Tourist Accommodation, Small Area Data, South Australia (Cat. no. 8635.4.40.001)

GLOSSARY

Average length of stay	Average length of stay is expressed in numbers of days and calculated by dividing <i>Guest nights</i> by <i>Guest arrivals</i> .
Bed spaces	Three-quarter beds are counted as one bed space; double beds as two bed spaces. Cots are excluded.
Capacity	Capacity in terms of <i>Guest rooms/units</i> or <i>Bed spaces</i> is the maximum number available to accommodate paying guests during the survey period. Capacity closed temporarily for seasonal reasons is included.
Establishments	The number of hotels, motels and guest houses and serviced apartments within the scope of the survey which operated for any part of the survey period, or which closed temporarily for the quarter for seasonal reasons.
Guest arrivals	The total number of paying guests counted only on the first night they stayed at the accommodation establishment during the survey period.
Guest rooms	The maximum number of rooms available at each establishment during the survey period for accommodating short-term paying guests. Units and apartments within serviced apartments are treated as rooms in these survey results.
Occupancy	Occupancy in terms of <i>Room nights</i> refers to the total number of nights each guest room or unit was occupied during the survey period. Occupancy in terms of <i>Guest nights</i> refers to the total number of paying guests counted on each night they stayed at the accommodation establishment during the survey period.
Occupancy rates	<i>Occupancy rates</i> represent occupancy expressed as a percentage of total capacity available during the survey period, e.g. for the period $\text{Room occupancy rate (\%)} = \frac{\text{Room nights occupied}}{(\text{Guest rooms}) \times (\text{No. of days in the period})} \times 100$ <p>providing that, for establishments closing (other than for seasonal reasons) or opening during the survey period, the denominator of the above expression includes only operating periods.</p>
Persons employed	The total number of persons working at each accommodation establishment at the end of the survey period (including working proprietors and those working on other than accommodation activities).
Room nights available	The number of guest rooms/units available multiplied by the number of days for which they were available during the survey period. For establishments closing (other than for seasonal reasons) or opening during this period, operating periods only are included.

Star grading The grading of hotels, motels and guest houses with facilities and serviced apartments based on the classification system used by members of the Australian Automobile Association (AAA). The gradings are allocated according to a points system based on the amenities and facilities available to guests. Details of the grading scheme are contained in the RACV-RAASA members' publication *Accommodation Australia*, or the individual tour guides produced by members of the AAA. For the purpose of classifying establishments to a star grading in this publication, 'half' star gradings are ignored (e.g. a two and a half star grading has been shown as two star).

From the June quarter 1999, some (very few) large establishments not star graded by the AAA have been allocated a star grade by the ABS for Survey of Tourist Accommodation statistical tabulation purposes.

Takings from accommodation Gross revenue from the provision of accommodation, including bed taxes. Takings from meals are excluded. Takings from accommodation for each month generally represent the takings received during that month. Where payments are received in advance of, or after, the provision of accommodation to guests, the monthly figure for takings from accommodation may not necessarily bear a direct relationship to the number of guests accommodated during the month.

FOR MORE INFORMATION...

- INTERNET* **www.abs.gov.au** the ABS web site is the best place to start for access to summary data from our latest publications, information about the ABS, advice about upcoming releases, our catalogue, and Australia Now—a statistical profile.
- LIBRARY* A range of ABS publications is available from public and tertiary libraries Australia-wide. Contact your nearest library to determine whether it has the ABS statistics you require, or visit our web site for a list of libraries.
- CPI INFOLINE* For current and historical Consumer Price Index data, call 1902 981 074 (call cost 77c per minute).
- DIAL-A-STATISTIC* For the latest figures for National Accounts, Balance of Payments, Labour Force, Average Weekly Earnings, Estimated Resident Population and the Consumer Price Index call 1900 986 400 (call cost 77c per minute).

INFORMATION SERVICE

Data which have been published and can be provided within five minutes are free of charge. Our information consultants can also help you to access the full range of ABS information—ABS user-pays services can be tailored to your needs, time frame and budget. Publications may be purchased. Specialists are on hand to help you with analytical or methodological advice.

- PHONE* **1300 135 070**
- EMAIL* **client.services@abs.gov.au**
- FAX* 1300 135 211
- POST* Client Services, ABS, GPO Box 796, Sydney 1041

WHY NOT SUBSCRIBE?

ABS subscription services provide regular, convenient and prompt deliveries of ABS publications and products as they are released. Email delivery of monthly and quarterly publications is available.

- PHONE* 1300 366 323
- EMAIL* subscriptions@abs.gov.au
- FAX* 03 9615 7848
- POST* Subscription Services, ABS, GPO Box 2796Y, Melbourne 3001



2863500003012
ISSN 1031-0770

RRP \$22.00

© Commonwealth of Australia 2001

Produced by the Australian Bureau of Statistics